



# EU-TRANSMONGOLIA PARTNERSHIP FOR SUSTAINABLE TOURISM AND RELATED BUSINESSES DEVELOPMENT



Transmongolia Sustainable  
Tourism Guide 2010

Promoting Sustainable Tourism  
in Mongolia and Inner Mongolia (China)



A project managed by



FORMAPER

MILAN CHAMBER  
OF COMMERCE INDUSTRY  
CRAFT AND AGRICULTURE

## INDEX

<b>THE EU-TRANSMONGOLIA PROJECT</b>	5
<b>WELCOME TO MONGOLIA</b>	5
Mongolia, the land of blue sky	6
Chinggis Khaan, man of the Millennium	8
Mongolian Tourism Profile and variety of destination landscapes	9
<b>KHUVSGUL AIMAG (region)</b>	10
Khuvs gul Mon Travel	13
Taigiin Gerelt Sor Cooperative	14
Buren Khaan	15
Khuvs gul Citizen	16
Khaluun Ilch Cooperative	17
Batbayar-Carver	18
<b>HUSTAI NATIONAL PARK (HNP)</b>	19
Mongolia Expeditions	20
Serten Group	21
Batsumber Group	22
<b>DORNOGOBI AIMAG (region)</b>	23
Gobi Morning Tour Camp	26
Tsagaan Lish Cooperative	27
Tsatsiin Bulag Tourist Camp	28
Shinekhuu	29
Khalzan-Uul accredited mineral resort	30
<b>UMNUGOBI AIMAG (region)</b>	31
Bayanzag Tourist Camp	34
Gobi Mirage Tourist Camp	35
Gobi Tour Camp	36
Mongolian Gobi Tourist Camp	37
Ankhsan Cooperative	38
Malchinii Hothon Cooperative	39
Gurvan Uul	40
<b>Tourism contact details in Mongolia</b>	41
<b>THE INNER-MONGOLIA AUTONOMOUS REGION, CHINA</b>	44
The Grasslands. When summer comes...	45
The Deserts	46
Long History and Culture	47
The Capital City Hohhot	49
Zinihu Mongolian Cultural and Ecological Village in Alxa League	50
Chifeng Hexigten Haleyi Animal Husbandry	51
Moonlake Eco-tourist Area in Tengri Dalai Desert	52
Inner-Mongolia Gengis Khan Mausoleum	53
Jinzhangan Camps in Hulun Buir grassland	54
Industry tourism of Yili Group	55
Inner-Mongolia Daihai Protective Tourist Area	56
Dahai Agricultural Sightseeing Garden	57
Arshan Chaihe Tourist Area	58
<b>Tourism contact details in Inner-Mongolia (China)</b>	59

# THE EU-TRANSMONGOLIA PROJECT

The “EU-Transmongolia Partnership for Sustainable Tourism and Related Businesses Development” project is financed by the Asian Investment Programme of the European Union.

The aims of this 36-month project are; i) to build the capacity of a Mongolian intermediary business organization, the Rural Investment Support Centre (RISC) in the development of high quality consultancy, counselling and Information Technology skills for existing and potential small and micro entrepreneurs (SMEs) in the field of sustainable tourism, and ii) to train 30 Mongolian and 15 Chinese (Inner Mongolia Autonomous Region) tourism SMEs in destination marketing and tourism operations in order to better equip them for handling tourism from the EU and promoting EU-Trans Mongolian trade and tourism links.

Overall, the project activities will upgrade sustainable tourism and related businesses in Mongolia and in the Inner Mongolia Autonomous Region of China, thereby:

- reinforcing private sector and new business development opportunities, promoting tourism and stimulating new, sustainable business development;
- strengthening commercial links between the EU and the greater Mongolian cultural area (Mongolia and the Inner Mongolia Autonomous Region) as well as fostering south-south trade links between Mongolia and the Inner Mongolia Autonomous Region of China.



FORMAPER

MILAN CHAMBER  
OF COMMERCE INDUSTRY  
CRAFT AND AGRICULTURE



## PROJECT PARTNERS:

### Formaper- Agency of Milan Chamber of Commerce

Via Santa Marta 18,  
20123 Milano Italy  
Mr. Andrea Badalamenti  
Tel: +39 02 8515 4459  
e-mail: formaper.int8@mi.camcom.it  
Web site: www.formaper.it

### Rural Investment Support Center

Post Box 24/133, Ulaanbaatar  
210524, Mongolia  
Mr. Shombodon Dorlig  
Tel: +976-99243305  
e-mail: shombodon@yahoo.com  
Website: www.risc.org.mn

### Università Carlo Cattaneo – LIUC

Unità Studi Interdisciplinari  
per l'Economia Sostenibile  
Corso Matteotti, 22  
21053 - Castellanza (VA), Italy  
Mr. Mark Brusati  
Tel: +39 0331 572 277  
e-mail: mbrusati@liuc.it  
Website: www.liuc.it

### Chamber of Commerce and Industry of Slovenia

Dimi\_eva 13,  
1000 Ljubljana, Slovenia  
Ms. Mojca Osojnik  
Tel: +386 01 58 98 101  
e-mail: Mojca.Osojnik@gzs.si  
Website: www.gzs.si

## PROJECT ASSOCIATE:

### Asian Encounters

B, Block 10, Constellation Cove  
Hung Lam Road, Tai Po,  
New Territories, Hong Kong  
Mr. Roger Harris  
Tel: +852 2698 6134  
e-mail: harris38@netvigator.com  
Website: www.asianencounters.org

### Inner - Mongolia Tourism Bureau

63, Xinhua St. Huhhot,  
Inner Mongolia, China  
Ms. Zhang Jachen  
Tel: +86 471 6946609  
e-mail: zjc2000em@sina.com  
Website: www.nmgtour.com

# WELCOME TO MONGOLIA

“Welcome to Mongolia, the land of Blue Sky and boundless space, the cradle of nomadic peoples. Time almost stopped there many centuries ago. Noise of civilization does not disturb calmness of most of wild and virgin places. Mongolia is one of few places where nature still keeps its original condition. You can find here fresh air and pure water springs, sand dunes of Gobi desert and high mountains, endless steppe and deep forests. One can discover many historical things like etched stone monuments, deer stones, rock drawings and forgotten tombs. On our website ([www.mongoliatourism.gov.mn](http://www.mongoliatourism.gov.mn)) you can find some information about this unique country. For sure, this will be the very first step to visit Mongolia”.

## Gansukh L.

Minister of Nature, Environment and Tourism of Mongolia



# MONGOLIA

## THE LAND OF BLUE SKY

Mongolia lies at the heart of Asia, between Russia and China. It is a huge country of spectacular diversity and unforgettable beauty. The total territory of the country is 1.566 million square kilometers making approximately 1.6 persons per 1 square kilometer. Most period of the year is clear, sunny with minimal humidity.

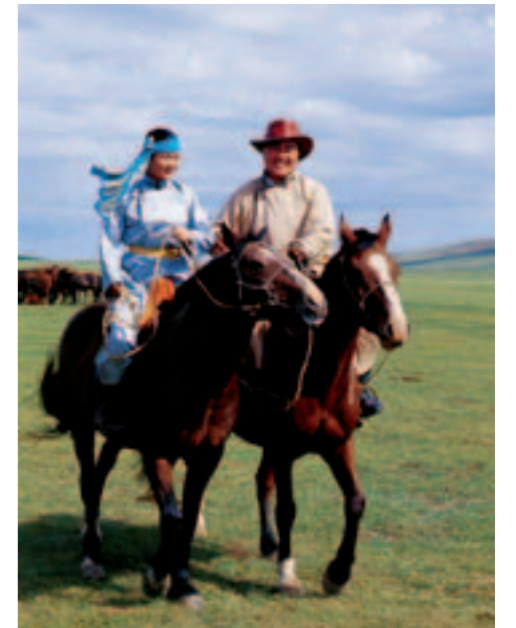
The vast expanse of Mongolia includes diverse, and entirely different, fascinating ecosystems. The country is rich in mineral resources: coal, copper, molybdenum, uranium, gold, phosphate, tin, nickel, zinc, tungsten and crude oil.



## THE LANDSCAPE OF MONGOLIA IS THE CRADLE OF MAN KIND. ONLY BLUE HEAVEN ABOVE...

The sky of Mongolia is the window of the world. Behind this window lies boundless void. The audacity of the Mongolian landscape is like the fighting spirit of a stallion, its serenity is like a little girl sleeping and hugging a kid, its beauty is like maiden fetching water from a spring, swinging her hips. Imagine a land with no fences and walls, a countryside that is open, free and unchanged. Imagine a country where boundless oceans of grass rise to white peaks that touch the immense blue sky; where rolling visions of sand march on to the horizon as the wind and sun dance around you.

Imagine a culture that is unchanged in centuries, where you will be welcomed at every door, where wealth is measured in happiness and where time and seasons pass as a glorious cycle. Imagine a land where travel is still an experience of the senses and a challenge to all your assumptions about the world. As we rush headlong into the 21st century, networked with machines but offline from our souls, it may be hard to imagine such a country.



# CHINGGIS KHAAN MAN OF THE MILLENIUM

Mongols are people who have rich legacy in the world political life. Mongolians struggle and defend our statehood for over 2000 years. During this period, Mongols succeeded in producing our own specific statehood in a transhumance manner with peculiar structure. Particularly, the Mongol Empire, established by Chinggis Khaan, occupied almost Eastern hemisphere and induced people's of the world to be aware of concept "state", "statehood".

Mongols introduced state, its law and democracy among the people. It is possible to say that Mongols first initiated constituents of transhumant democracy by forming Ikh Khuraldai (Great Congress) and Setsdiin Zuvlul (Council of Counselors).

Ikh Zasag Law, came into that period, is very significant legal document that can be equal to the ancient Babylon's Hammurapi law and Manu Law of India. Chinggis Khaan became emperor of empire where five races of people speaking seven hundred and twenty different languages.

They united civilized nations in Mongol empire connecting East and west in political, economical and cultural fields. The philosophy of international relations in this period was to produce amity and liberty of politics, religions and various views, that became conspicuous in the current international relations.



# MONGOLIA TOURISM PROFILE AND VARIETY OF DESTINATION LANDSCAPES

Since the 1990s tourism sector in Mongolia has been privatized and country's rapid development has significant influence to the tourism growth. In 1995 the government resolved basic directions for the tourism development between 1995 and 2005. In 2000 Tourism Law was adopted by the Parliament of Mongolia, which became basic of legal environment of the tourism development. The government supports for better business environment and took the following actions such as abolishing of license in tourism business since 2002 and issuing visa in international border points to citizens of the country where has not got Mongolian embassy and counselor section. Mongolian government exempted of VAT on inbound tourism, considering its effect on national economy and ability to earn foreign currency and exempt of custom tax on import of winter tourism facilities in order to extend the season.

As a member of the World Tourist Organization, Mongolia has been actively participating in its main events, particularly the large scale tourism exhibitions in order to promote Mongolia in foreign countries and increase the number of foreign tourists to Mongolia. Number of tourists to Mongolia has increased constantly reaching 464.900 visitors in 2009. Today, there are over 200 tour operators, 320 hotels, 200 tourist camps, and 182 guides, who have been certified.

Around 40 state and private universities prepare specialists for tourism mainly in managerial level. All these result shows that business and legal environment for tourism developed well in Mongolia however there is many more action to take for sustainable tourism development. The main achievement in the past is an establishment of common image of Mongolia which is a peaceful destination with hospitable people, pleasant for foreign investment. Due to its geographical location and climate. Mongolia considered to be lower risk zone and comparatively safe and peaceful destination. 90% of tours take place in the countryside. Nomadic life and pristine nature is the main source of Mongolian tourism. Currently, tourism developing intensively in Ulaanbaatar, Umnugobi, Uvurhangai and Hovsgul provinces due to its accessibility, infrastructure development, and tourism facility. As a secondary tourism core such as Hentii, Arhangai, Bayanulgi Uvs, Hovd should be developed in mid-term basis due to their natural resource and ethnic groups lifestyle.



## GENERAL INFORMATION

### Territory

100,6 thousand km<sup>2</sup>

### Population

123 thousand

### Geographic position

Norther part of country, bordered with Russia



**Average altitude**  
1.300 - 1.600 m

**Travel distance from UB**  
730 km

**Landscapes**  
Taiga forests, forest, forest steppe

**Economy**  
Main economic sector is agriculture; number of livestock has reached 3.8 million in 2008 and the aimag has first rank by number of livestock.

### Main attractions

**Natural:** Khuvsgul Nuur National park, Khordil saridag Special protected area, Burenkhaan, Erchim range, Tagna and Soyon mountains.

**Historic and cultural heritage:** monuments of Stone and Bronze ages, 2m-3m high deer stones, 3m-4m high tombs, monuments of Munkh Khaan's palace and monuments to Kul Bilge Khaan, monument in the homeland of Alungoo, the highest grandmother in Chinggis' family; legendary cave of Dayan Deerkh of ancient shamanism; 100 beautiful deer stones, the Sukhbaatar ship on Khuvsgul Lake.

**Living culture:** the aimag is also famous with reindeer people (Tsaatan) as successors of the traditional Shamanism, although they are ethnic minority that is 0.23% in the aimag population.

### Flora and fauna

The Khuvsgul area is also rich in medical herbs, such as peony, liquorice, astragalus, wild rose, saussurea involucrata, hawthorn, valerian, thyme, thermopsis. Of wildlife species, in Khuvsgul there are brown bears, foxes, wolves, squirrels, badgers, ermines, wolverines, muskrats, martens, steppe polecats, and protected species, such as deer, roe deer, elk, wild sheep, ibex, musk deer, sable, beaver and otter.

### Website

[www.pmisgov.mn/khuvsgul/](http://www.pmisgov.mn/khuvsgul/)



Khuvsgul aimag, located in the northern part of Mongolia with its fresh and deep lake of Khuvsgul and Khordil Saridag mountain range, isolated and deep forests and peculiar customs of many ethnic groups is the main destination of foreign tourism in Mongolia.

In total, 43 tourist camps, 12 sanatoriums and 22 tribes are working in tourism sector of aimag. The main tourism area is Khuvsgul Nuur National Park, divided by 2 parts: A part – western coast of lake, which has 55000 hectare territory, B- eastern coast, territory- 60000 hectare.

### MAIN DIRECTION OF TOURISM SECTOR:

- To form and develop the first priority tourism zone in the region of the Khuvsgul Lake, the Darkhad Depression and Eg and Uur Rivers;
- To develop community-based tourism and increase local and herders' incomes by designing and marketing new tourist products based on their nomadic lifestyle;
- To develop nature-friendly tourism and take actions preventing negative effects in tourist locations;
- To expand foreign relations of the aimag tourism industry and to enhance information and promotion of the tourist activities.

# KHUVSGUL AIMAG REGION



## MAIN ATTRACTIONS:

### KHUVSGUL NUUR

Khuvsgul Lake is well known not only in Mongolia, but also worldwide. It is most notable mountain lake and the deepest lake in Mongolia and in the Central Asia, and the world's 14th largest source of fresh water. 1645m above sea level, frozen from January until May, is called the „Dark Blue Pearl“ of Mongolia. The scientists have announced that the lake contains 2% of world's fresh water resources.

Khuvsgul Lake is 136km long, 36.5km wide, and in the middle it is 262 meters deep. Its area is 2,760 square kilometers. The water in the Lake is the purest water in the world and it has low mineralization (140-240 milligrams per liter), ion variation and hardness (1.1-2.9 milligrams per equivalent liter). It has weak and variable alkalinity (7.4-8.2). Over 90 rivers and streams flow into the Khuvsgul, and the Eg River flows out and joins the Selenge River flowing onto Lake Baikal in Russia.



### DARKHAD DEPRESSION

About 50km west of Khuvsgul Nuur, in Renchinlkhumbe soum, is a large depression called Darkhadyn Khotgor. Darkhadyn Khotgor is a large geological depression, and it is roughly the same size as Khuvsgul Lake and was indeed originally formed as a glacial lake. It is 100km in length and located between the beautiful mountains of Khordil Saridag and Ulaan Taiga. The depression consists of extensive marshes and many small lakes.

This is one of the best-watered regions in Mongolia: the aimag has about 300 lakes and 200 of them are in this area.

The lakes are a vital part of Mongolia's very limited commercial fishing industry - white carp and trout. Salmon and huge taimen can also be found in the region.

The difficulty in reaching the region ensures that the unique Tsaatan people who inhabit the valleys are able to continue their traditional lifestyle - but tourism is slowly making an impact. Darkhad is one of Mongolia's best known centres of shamanism.



### Ice Festival in February

Ice Festival offers you an opportunity to taste the crispy, icy and sunny Mongolian winter. To make you fully enjoy the Mongolian winter the Khuvsgul Hangard camp offers you to stay in ice gers. You will be able to have a life-lasting experience of riding Mongolian horses or if you wish, even reindeers, in the sparkling snow.

### Winter Skating Marathon in March

“Winter Skating Marathon” organized in the Khuvsgul lake of Khuvsgul province has brought new challenge for developing winter tourism in Mongolia. Imagine something unique ... Skating in the slippery ice of the beautiful Khuvsgul Lake under sun shining blue sky and enjoy living in the winter like nomads do ... are part of the marathon.



### Reindeer Festival in July

“Dalai Tour” camp of Khuvsgul Mon travel LLC have successfully organized “Tsaatan/Reindeer herder Festival demonstrating the wild nature contacts between human and animals, quaint living traditions and national heritage of tsaatan people for the recent 4 years with assistance of Tsaatan, local residents and both domestic and foreign guests in Khuvsgul aimag. It provides great opportunity to see Tsaatan people's ancestral culture, special lifestyle and to play reindeer polo.

These ethnic people are last rare people in the world now. Tourism services included joining yak caravan, reindeer and horse riding, have a journey on boat or canoe. You can see Tsaatan people's traditional music, folk concerts. Feeling how these people's life soul is Shamanism.



## PROJECT BENEFICIARIES IN KHUVSGUL AIMAG (REGION)



<b>Main activity</b>	Organisation of Tsaatan Festival
<b>Additional activities</b>	Hotel in Murun, restaurant and bar, traditional art and sport performances, small museum, art shop
<b>Location</b>	Khuvsgul Lake, Murun soum, Khuvsgul aimag
<b>Facilities</b>	at Dalai Tour tourist camp
<b>Travel distance from UB</b>	800 km
<b>Main attractions nearby</b>	Natural: Khuvsgul lake Living culture: Tsaatan people
<b>Season</b>	June - August
<b>Tours</b>	Tsaatan tour Dreanm land Fishing tour Steppe tour Bird watching tour Hunting tour Culture tour Nomadic tour
<b>Local guide service</b>	English speaking guide
<b>Food</b>	Restaurant seating 120 guests
<b>Excursion possibilities</b>	Hiking, trekking, Bicycle tour, jeep tour
<b>Souvenirs, shopping</b>	Yes
<b>Special features</b>	<ul style="list-style-type: none"> <li>• Introduction to the special lifestyle of Tsaatan people to both domestic and foreign tourists,</li> <li>• Support the youth talents of Tsaatan music,</li> <li>• Promotional and Research activities of traditions and culture of Tsaatan people,</li> <li>• Multi-purpose activities demonstrating culture and lifestyle of different ethnic groups</li> </ul>
<b>Languages</b>	English
<b>Future highlights</b>	The festival shall be transformed into a big international tourism event, with Tsaatan traditional musics and folklore, Tsaatan polo, wrestling, competition, national games, anklebone game, three man games, and art and painting fair "Mongolian Golden khormor", shamanic rituals, horse and reindeer riding, travelling by ox-cart and handicraft exhibition and visits to different ethnic group families

**Contact details**  
J. Gonchig  
Khuvsgul aimag,  
Murun soum, 1 khoroo

**Telephone**  
+976-99680799

**E-mail**  
gonchig\_2006@yahoo.com

**Website**  
www.montravels.com



Every year Khuvsgul Mon Travel organises the "Tsaatan Festival", which aims to attract both domestic and foreign visitors in order to assist improve the Tsaatan people livelihoods and pass on the tradition and cultural heritage to the younger generations. Khuvsgul aimag is one of the wonderful natural scenes with rich traditions and rituals of Mongolians and it is home place of different ethnic groups. The special lifestyle of Tsaatan residents is considered as the most important attraction for tourists, not only in Khuvsgul aimag, but as key destination of tourism routes in Mongolia. The activities of annual celebration of "Tsaatan festival" shall be expanded in the future.

"Dalai Tour" camp of "Mon travel" company has operated for over 9 years and it has the capacity to serve 120 persons at the one time. The tourist camp has totally 30 well furnished gers with 2,3,4 beds, 4 wooden ger houses each with 2 beds and European, Asian and National Food restaurant with 120 seats. Also there is a bar with 60 seats and a art and souvenir shop in the tourist camp.

# KHUVSGUL MON TRAVEL



<b>Main activity</b>	Hand weaving, knitting and felt arts												
<b>Additional activities</b>	To develop wool and cashmere knitting and felt arts in rural areas using simple technology, livestock and vegetable production												
<b>Location</b>	Bag 2, Murun soum, Khuvsgul aimag, Mongolia												
<b>Travel distance from UB</b>	730 km												
<b>Season</b>	All year around												
<b>Products</b>	Yak and woolen clothes and felt bag, felt pictures (wall decoration)												
<b>Production details</b>	Organic handmade products made of camel and yak wool. Collaborates with Mary&Martha LLC and exports goods to international market.												
<b>Price</b>	<table border="0"> <tr> <td>Woolen hat</td> <td>11 Euro</td> </tr> <tr> <td>Woolen gloves</td> <td>7 Euro</td> </tr> <tr> <td>Shirt</td> <td>22 Euro</td> </tr> <tr> <td>Wall decoration</td> <td>5 Euro</td> </tr> <tr> <td>Child's boot</td> <td>8 Euro</td> </tr> <tr> <td>Felt bag</td> <td>15 Euro</td> </tr> </table>	Woolen hat	11 Euro	Woolen gloves	7 Euro	Shirt	22 Euro	Wall decoration	5 Euro	Child's boot	8 Euro	Felt bag	15 Euro
Woolen hat	11 Euro												
Woolen gloves	7 Euro												
Shirt	22 Euro												
Wall decoration	5 Euro												
Child's boot	8 Euro												
Felt bag	15 Euro												
<b>Additional products</b>	Small felt souvenirs, felt shoes												
<b>Souvenir, shopping</b>	Yes												
<b>Special features</b>	Yak and camel woolen goods												
<b>Languages</b>	English												
<b>Future highlights</b>	To establish small textile factory as result of accumulation of profits; In next 15-20 years, to expand business into advertisement centre of sustainable-tourism related businesses linking Russia, Mongolia and China.												



**Contact details**  
R. Alimaa, Chairwoman of the cooperative

**Address**  
Bag 2, Murun soum, Khuvsgul aimag, Mongolia

**Phone**  
+976-99504385 - 91388655

**E-mail**  
alimaa\_51yahoo.com

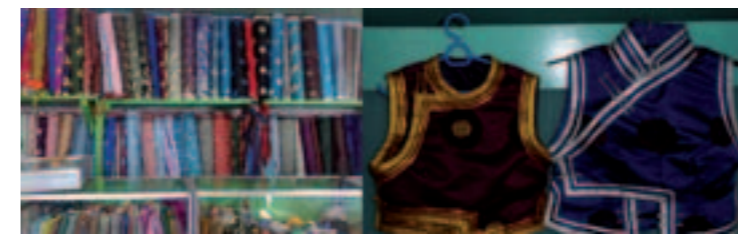
Taigiin Gerelt Sor cooperative was established in 2006 by founder members, and it produces knitted, weaved and felt products from Mongolian breed sheep as well as carved wooden items. It is also engaged in livestock and vegetable production. The cooperative also provides informal education for adults. The cooperative has a number of strengths such as qualified personnel, a plenty of raw materials, a good positioning on markets, reliable clients and good relations with professional institutes able to assist in innovation of its product design. The following success stories of the cooperative are the key to a successful performance on the market:

- Golden medal for felt art products in 2006 from the "Joint Labor - Cooperative Development" of Exhibition of cooperators in the Western Region;
- Special reward for camel wool garment in 2006 from "Khuvsgul Partnership" Exhibition;
- Bronze medal for wooden carving in 2007 from "Erdenet Partnership - 2007" International Exhibition;
- Golden medal and Honored Certificate for products displayed in the Ulaanbaatar-Xilon Gol Partnership International Exhibition, etc.

## TAIGIIN GERELT SOR COOPERATIVE



<b>Main activity</b>	Commercial center for silk fabrics												
<b>Additional activities</b>	Sewing assistance, repair work												
<b>Location</b>	Murun sum, Khuvsgul aimag												
<b>Travel distance from UB</b>	730 km												
<b>Season</b>	All year												
<b>Products</b>	National costumes (deel), and waistcoats												
<b>Production details</b>	Sewing, traditional clothes												
<b>Price</b>	<table border="0"> <tr> <td>Silk deel for man</td> <td>36 Euro</td> </tr> <tr> <td>Silk deel for woman</td> <td>29 Euro</td> </tr> <tr> <td>Children deel</td> <td>15 Euro</td> </tr> <tr> <td>Traditional shirt</td> <td>22 Euro</td> </tr> <tr> <td>Waistcoat</td> <td>29 Euro</td> </tr> <tr> <td>Cotton deel</td> <td>22 Euro</td> </tr> </table>	Silk deel for man	36 Euro	Silk deel for woman	29 Euro	Children deel	15 Euro	Traditional shirt	22 Euro	Waistcoat	29 Euro	Cotton deel	22 Euro
Silk deel for man	36 Euro												
Silk deel for woman	29 Euro												
Children deel	15 Euro												
Traditional shirt	22 Euro												
Waistcoat	29 Euro												
Cotton deel	22 Euro												
<b>Additional products</b>	In-sided and out-sided Mongolian traditional shirts, skirts												
<b>Souvenir, shopping</b>	Different kind of souvenirs.												
<b>Special features</b>	Traditional clothes (Mongol deel), souvenirs, bags												
<b>Future highlights</b>	Business, development including: <ul style="list-style-type: none"> <li>• workers' qualifications and skills;</li> <li>• marketing at regional and national level including visibility such as brand Name Shop at the aimag airport.</li> </ul>												



**Contact details**  
Ts.Tseyn-Oidov

**Address**  
West south side of "Durwun Uul" market, Murun sum, Khuvsgul aimag

**Phone**  
+976-99389266, 99383620

**E-mail**  
oidov\_0410@yahoo.com

In August 2006, Tseyn-Oidov, owner Buren-Khaan shop, started activity. Today number of employees is 6. Since 2007, we trained our 5 tailors in making souvenirs or household staffs from cuts of silk and other fabrics and started souvenirs for domestic and foreign tourists.

Buren-Khaan is a commercial center for silk fabrics, offering:

- Raw materials: silk and fabrics and supplementary goods (trade);
- Readymade products: cotton and piled deel for children and adults, waistcoat, in-sided and out-sided Mongolian traditional shirts, skirts, costume and different kinds of souvenirs.



## BUREN KHAAN (HANDICRAFT)





<b>Main activity</b>	Manufacturing of leather, woolen and textiles								
<b>Additional activities</b>	<ul style="list-style-type: none"> <li>• Vocational training,</li> <li>• Clothes repair and in service production,</li> <li>• Production of shoes and repair,</li> <li>• Production of pupils' uniform.</li> </ul>								
<b>Location</b>	Murun soum, Khuvsgul aimag								
<b>Facilities</b>	Located at Yorgo tourist camp								
<b>Travel distance from UB</b>	730 km								
<b>Season</b>	All year								
<b>Products</b>	<p><b>leather:</b> paintings, wallets, key handles, handbags, etc</p> <p><b>wood:</b> bowls, animals, etc.</p> <p><b>wool:</b> slippers, socks, clothes, etc</p> <p><b>textiles:</b> traditional clothes and modern clothes</p>								
<b>Production details</b>	Mongolian traditional clothes and clothes made on request of clients								
<b>Price</b>	<table> <tr> <td>Leather items</td> <td>15-22 Euro</td> </tr> <tr> <td>Woolen souvenirs</td> <td>8-15 Euro</td> </tr> <tr> <td>Textiles</td> <td>22-29 Euro</td> </tr> <tr> <td>Coral crafts</td> <td>3-8 Euro</td> </tr> </table>	Leather items	15-22 Euro	Woolen souvenirs	8-15 Euro	Textiles	22-29 Euro	Coral crafts	3-8 Euro
Leather items	15-22 Euro								
Woolen souvenirs	8-15 Euro								
Textiles	22-29 Euro								
Coral crafts	3-8 Euro								
<b>Additional products</b>	Coral crafts and wicker work								
<b>Souvenir, shopping</b>	Yes								
<b>Future highlights</b>	Ger museum of traditional handicrafts and improvement of type, quality and design of souvenirs								

**Contact details**  
D.Otgondulam  
"Khuvsgul Citizen" Company

**Address**  
Murun soum, khuvsgul aimag

**Phone**  
+976-99504406 (mobile),  
+976-1-382-24920 (home)

**E-mail**  
irgen\_o@yahoo.com

"Khuvsgul Citizen" LLC was founded in 2004. Located in Murun soum, works on establishing a ger museum for traditional handicrafts at the "Yorgo" tourist camp, established in 2006 on the bank of Khuvsgul lake in Khatgal town.

Yorgo has 6 wooden fully equipped gers, 15 dwelling gers and a dining hall. It offers as well services like reindeer, horse and yak riding and water cruise.

## KHUVSGUL CITIZEN



<b>Main activity</b>	Manufacturing of lambwool and cashmere products (20 kinds of knitted and felt products)												
<b>Additional activities</b>	Felt souvenirs												
<b>Location</b>	Murun soum, Khuvsgul aimag												
<b>Travel distance from UB</b>	730 km												
<b>Season</b>	Felt product-souvenir gers, camel, bag, slippers, water bottle holder												
<b>Products</b>	Handicrafts and souvenirs made of lamb wool												
<b>Price</b>	<table> <tr> <td>Felt slipper</td> <td>12 Euro</td> </tr> <tr> <td>Felt ger</td> <td>3 Euro</td> </tr> <tr> <td>Handbag</td> <td>7 Euro</td> </tr> <tr> <td>Baby felt boots</td> <td>7 Euro</td> </tr> <tr> <td>Felt hat</td> <td>14 Euro</td> </tr> <tr> <td>Felt souvenirs</td> <td>1-3 Euro</td> </tr> </table>	Felt slipper	12 Euro	Felt ger	3 Euro	Handbag	7 Euro	Baby felt boots	7 Euro	Felt hat	14 Euro	Felt souvenirs	1-3 Euro
Felt slipper	12 Euro												
Felt ger	3 Euro												
Handbag	7 Euro												
Baby felt boots	7 Euro												
Felt hat	14 Euro												
Felt souvenirs	1-3 Euro												
<b>Additional products</b>	Felt picture, felt souvenirs												
<b>Souvenir, shopping</b>	Yes												
<b>Special features</b>	All raw material comes from local herders production of a sleeping bag												
<b>Future highlights</b>	Diversify the production including sleeping bags and other camel and woolen products												

**Contact details**  
Naljirmaa.D

**Address**  
'Khaluun Ilch' Cooperative  
8th bag, Murun soum,  
Khuvsgul Aimag

**Phone**  
+976-99386208

**E-mail**  
haluunilch@yahoo.com

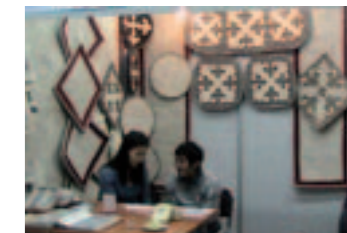
Khaluun Ilch Cooperative, established in 2006, is democratically run and manufactures final products by processing local lamb wool and other cashmere fibres as main raw materials.

It's a skilful team which is well known for their quality products in Khuvsgul aimag. The aim is to produce ecologically clean and high qualities woolen products by rehabilitation of Mongolian traditional technologies of wool processing.

Our cooperative produces more than 20 kinds of products made of local lamb, camel and yak wool using ancient traditional handwork techniques.

To extend our business, we'll manufacture various and qualitative products for foreign and domestic tourists and work with objective to gradually approach the foreign market.

## KHALUUN ILCH COOPERATIVE



<b>Main activity</b>	Wood carving, Mongol ger
<b>Additional activities</b>	Ger wooden furniture
<b>Location</b>	Murun soum, Khuvsgul aimag
<b>Travel distance from UB</b>	730 km
<b>Products</b>	Mongolian ger, ger wooden furniture, carving products: <ul style="list-style-type: none"> <li>• 5 wall decorated ger</li> <li>• 5 wall carved ger</li> <li>• 5 wall typical ger</li> <li>• Cloth board</li> <li>• Bow legged table</li> <li>• Chairs</li> <li>• Carving souvenirs</li> </ul>
<b>Production details</b>	Carved, patterned, mottled wooden products
<b>Additional products</b>	Wooden souvenirs
<b>Souvenir, shopping</b>	Yes

**Contact details**  
Batbayar

**Address**  
1th bag, Murun soum,  
Khuvsgul Aimag

**Phone**  
+976-99385510

Carver Batbayar collaborated with other carvers in Murun soum produced many kind of products.

His wooden carving is very famous and he was awarded many times in National and regional level.



## BATBAYAR - CARVER



### GENERAL INFORMATION

**Territory**

HNP is located in Tuv aimag's Altanbulag, Argalant and Bayankhangai sum's land. HNP located between 105°40-106°37 east longitude and 47°35-47°52 north latitude.

**Average altitude**  
1190-1800 m

**Travel distance from UB**  
70 km west of Ulaanbaatar

**Landscapes**  
Forest steppe

**Main attractions**

Tourists can visit ancient graves and statues, deer stone sites and ruins of Buddhist stupa while they are enjoying to see wild life such as Przewalski horse, red deer, marmot, gazelle and many species of birds. Based on Community tourism, HNP shows nomadic people's traditional lifestyle and traditional methods of how to make milk products and how to produce felt and other materials.

**Flora and fauna**

Around 450 species of vascular plants belong to 214 general and 65 specific families grown in HNP. In HNP, there are about 46 species of mammals including red deer, roe deer, wild boar, white tailed gazelle, Przewalski horse, argali sheep, marmot, Eurasian badger, grey wolf, fox, manul cat and lynx. Besides, there are 217 species of birds such as demoiselle crane, cinereous vulture, black stork, great bustard, saker falcon, steppe eagle, spotted woodpecker etc.

**Contact**

**Phone:** +976-21-245087, 976-11-329895

**Fax:** +976-21-245881

**E-mail:** takhi@hustai.mn

**Website**

www.hustai.mn



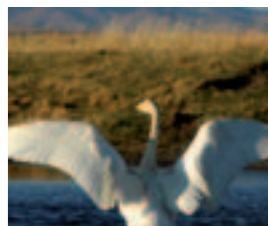
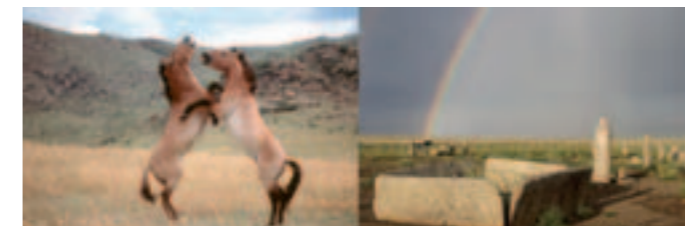
## HUSTAI NATIONAL PARK HNP

The Hustai National Park in Mongolia is world famous for the successful reintroduction of the Przewalski horse. In addition to these wild horses, roaming freely in their land of origin again, the park and its surrounding area have much to offer to the lovers of the nature and the culture of Mongolia, located in the heartland of Asia.

Hustai National Park proudly reintroduced the Przewalski horse-Takhi, the only still living predecessor of the domestic horse and other wild life. Takhi reintroduction project started in 1993 with support of Dutch government. First, 15 takhis were brought to Mongolia on June 5, 1992. After this, every 2 years till 2000, a total of 84 takhis were brought to Hustai nuruu.

The project is continuing with good results and first generation of Takhi born in wild are reproducing themselves now. In 2008, there were 20 groups of Przewalski horses and their total number reached over 230.

Our "Hustai" tourist resort is open for whole year and can accommodate up to 90 visitors at the same time and 40 visitors during winter time. "Hustai" tourist resort has facilities as nice restaurant, comfortable hotel rooms and gers, showers and toilets. Beside these facilities our resort has information center, souvenir shop, conference room and sport game place.



<b>Additional activities</b>	Cultural and Active Adventure Tours Scientific Research Expeditions, Media and Filming Logistics
<b>Location</b>	Expeditions equipment and vehicle fleet
<b>Travel distance from UB</b>	Ulaanbaatar, Mongolia
<b>Season</b>	All year around
<b>Tours</b>	Yes
<b>Local guide service</b>	Yes
<b>Food</b>	Yes
<b>Excursion possibilities</b>	Yes
<b>Special features</b>	Tours to virtually any part of Mongolia upon request
<b>Language</b>	English, German, French, Italian, Russian
<b>Future highlights</b>	Further expansion of the community and environmental support

**Address**  
BATBAYAR Amgalanbayar  
Jamyan Gun street, bld 5/2,  
Mongolia Expeditions LLC,  
Ulaanbaatar, Mongolia

**Phone**  
+ 976 11 329279

**E-mail**  
info@mongolia-expeditions.com

**Web site**  
www.mongolia-expeditions.com

Established in 2004 by a team of travel experts of Mongolia with over 20 years of field experience, Mongolia Expeditions specializes in uncommon adventures, cultural journeys, scientific research expeditions, media and filming logistics and exploration of new destinations.

Our philosophy is to promote and exercise low impact and culture-friendly travel in every aspect of our operations. Mongolia Expeditions' team competently handled travel arrangements for over a thousand satisfied customers. Primary clientele of Mongolia Expeditions comes from EU countries such as Italy, UK, Switzerland, Germany, Sweden, France, Belgium, Holland, Finland and Poland.

## MONGOLIA EXPEDITIONS



<b>Main activity</b>	Organizing the "Mini Naadam" festival to present Mongolian nomadic lifestyle, history, historical sites, tradition and culture, introducing to herders' everyday work.
<b>Additional activities</b>	Wrestling, Horse riding race, Archery, National games
<b>Facilities</b>	None
<b>Location</b>	Hustai National Park, Argalant soum, Tuv aimag
<b>Travel distance from UB</b>	70 km
<b>Main attractions nearby</b>	<b>Natural:</b> Hustai National Park <b>Cultural:</b> ancient graves and statues, deer stone sites and ruins of Buddhist stupa. <b>Living culture:</b> nomadic people's traditional life style and traditional method of how to make milk products and how to produce felt and other materials.
<b>Season</b>	All year around
<b>Tours</b>	No
<b>Local guide service</b>	Yes
<b>Food</b>	Yes
<b>Excursion possibilities</b>	Yes
<b>Souvenirs shopping</b>	Yes
<b>Special features</b>	Vicinity of the Hustai National Park and opportunity to observe the only wild horse in the world, the Takhi horse (Przewalski horse)
<b>Languages</b>	English
<b>Future highlights</b>	Mini Naadam festival – to advertise and make known Mongolian traditional men's three naadam, mongolian herder family's culture and tradition

**Contact details**  
Altantsetseg Aranz, "Serten"  
group leader Serten" group,  
2n bag, Argalant soum,  
Tuv aimag

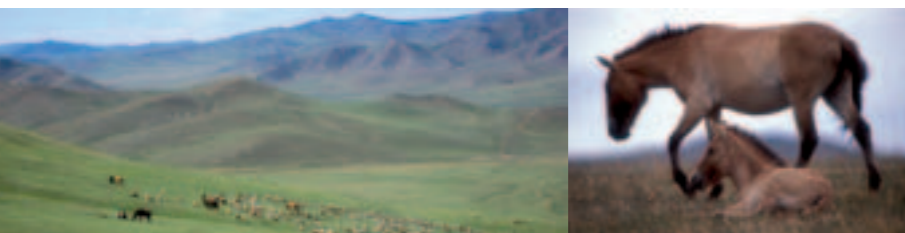
**Phone**  
+976-11-99959334

Serten group was established by 12 herder families in 2002 which have become 17 herder families today. Since 2006 the group is engaged in Community Based Tourism. Serten group offers opportunity to fulfil traditional Naadam's festival, which shows Mongolian herder families culture and tradition. Located in the vicinity of the Hustai National Park, Serten Group provides services to foreign tourists, produce milk products, English language guiding, computer, meals, horseback riding and other services.

## SERTEN GROUP



<b>Main activity</b>	Horse trekking tours (long and short distance)
<b>Additional activities</b>	<ul style="list-style-type: none"> <li>• Travel in wild nature, bird watching and animal watching (foto-safari)</li> <li>• Experience the nomadic lifestyle</li> <li>• National traditional games</li> </ul>
<b>Facilities</b>	None
<b>Location</b>	Altanbulag soum, Tuv aimag
<b>Travel distance from UB</b>	70 km
<b>Main attractions nearby</b>	<p><b>Natural:</b> Hustai National Park</p> <p><b>Cultural:</b> ancient graves and statues, deer stone sites and ruins of Buddhist stupa.</p> <p><b>Living culture:</b> nomadic people's traditional life style and traditional methods of how to make milk products and how to produce felt and other materials.</p>
<b>Season</b>	All year around
<b>Tours</b>	Yes
<b>Local guide service</b>	Yes
<b>Food</b>	Yes
<b>Excursion possibilities</b>	Yes
<b>Souvenir shopping</b>	No
<b>Special features</b>	Children horse riding, trekking
<b>Language</b>	English
<b>Future highlights</b>	To improve collaborative work of members of herders' in the group in order to conserve nature, promote and advertise herder's traditions and culture on domestic and foreign markets



**Contact details**  
Tserendash Namjil,  
Representative  
of "Batsumber" group

**Address**  
Batsumber group, 2nd bag,  
Argalant soum, Tuv aimag

**Phone**  
+976-91191709

"Batsumber" herders group was established in 2004 by 15 families with the aim to conserve nature, use pasture land rationally and work in partnership. The group is engaged in Community Based Tourism (CBT) and begun to receive foreign tourists since 2005. Today the group is composed of 20 families and provide services to domestic and foreign tourists by producing milk products and traditional food, offer guiding in English language and horse trekking tours (long and short distance) for adults and children.

## BATSUMBER GROUP



## GENERAL INFORMATION

**Territory**  
109,5 thousand km<sup>2</sup>  
**Population**  
55,7 thousand  
**Geographic position**  
South east part of country, bordered with Cina



**Average altitude**  
1.200 - 1.600 m

**Travel distance from UB**  
456 km

**Landscapes**  
Steppe and desert.

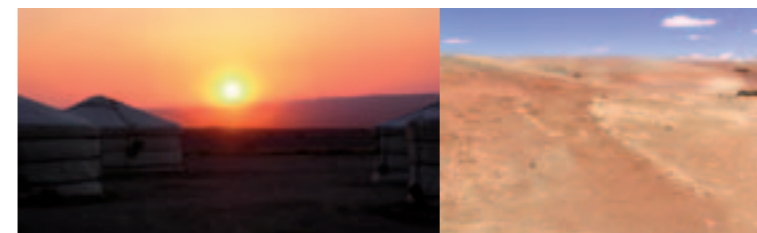
**Economy**  
GDP: 42.5 billions MNT  
Animal husbandry 36%, transportation 10.7%, construction 10.6%, wholesale and retail trade 9.9%, education 7.4%, social insurance 7.1%, other 18.3%.

**Infrastructure:**  
**Electric power:** All soums are linked to the central high voltage electric line, excluding Mandakh and Khatanbulag soum;  
**Heat supply:** 299.3 m<sup>3</sup> of establishments and companies premises and 28 m<sup>3</sup> of households and apartments premises are served by the central heating system;  
**Railroad:** communication northern and southern neighbor countries representing a major axis of central region development passing through the aimag over 471 km;  
**Communication and information technology:** 5 operators.

**Main attractions**  
**Natural:** Har uul, Suikhent Petrified Forest Monument Ergeliin zoo  
**Historic and cultural heritage:** Noyon hutagt Danzanravja, Khamar monastery, Shambala land, Long song, Tsam dance.  
**Living culture:** Nomadic lifestyle.

**Flora and fauna**  
Territory is famous for medical herbs such as liquorice, cuscuta australis and annual, perennial species, including wild leek, saksaul, elm, allium mongolicum and saltwort. Among wild animals there are wild horses, wild sheep, ibex, black tailed antelope, white antelope and lynx. Birds include condors and eagles.

**Website**  
[www.pmisgov.mn/dornogobi](http://www.pmisgov.mn/dornogobi)

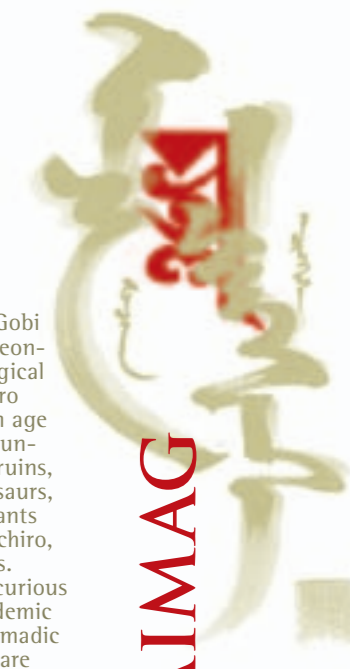


Dornogobi is a virgin Gobi region rich in such paleontological and archeological finds as stone age, petro glyphs bronze and iron age instruments burial grounds, obelisks and town ruins, fossils of ancient dinosaurs, marine animals and plants petrified trees, march chiro, buffalos and ostracizes. Oasis and dunes with curious natural structures, endemic plants and animals, nomadic culture and traditions are subjects for development of tourism.

The most visited by tourists and travelers spots are Noyon Khutukh (prophet) Danzanravjais museum, Khamar monastery founded by him and Shambala with its surrounding, historical and religion memorials. Shambala is thought to be a celestial place that enlightened beings can reach with the help of their intelligence and meditation and one of such spots from where one can communicate with Shambala is located not far from Khamar monastery. Lately historic cognitive pilgrim- meditational and camel tours have tendency to develop.

In this aimag tourist centers as Ulaanbaatar railway bureau of tourism and travel are present. Tavan dokhio, Shand, Gobiin ogloo tourist centres are in Sainshand, Dornyin gobi and one in Zamyin uud, Saruul tseel in Altanshree, Tsatsyin bulag in Saikhan dulaan. Overall the region counts 40 hotels.

## DORNOGOBI AIMAG REGION



## MAIN ATTRACTIONS:

### HAMAR MONASTERY

This monastery was established by Danzanravjaa, a renowned Mongolian educator, in the 1820s. It was not only the site of Mongolia's first school and theatre, but also a centre for public education with a library, museum and other facilities open to the public. The Monastery was completely destroyed by Communist soldiers in 1938, as part of the campaign to purge Mongolia of its religious culture. Hamar Monastery has been partially rebuilt with private funds since 1990, and now is home to a dozen monks. Today at monastery remain dozens of caves where great yogic masters practice meditation and exercises, as well as fossilized dinosaur bones, and rock fissures containing petrified wood. It is a beautifully scenic area containing saxaul groves, sand dunes, and steppe stretching beyond the eyesight.

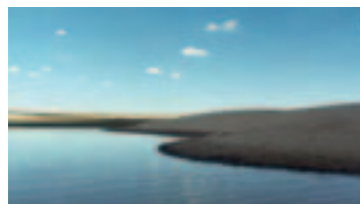


### DANZANRAVJAA MUSEUM

The Home-museum is a large museum which has more than 1200 archeological finds related to the biography and works of the great writer born in the Mongolia Gobi on 19th century. Objects used and created - theatre of nomads, culture, arts, and religious rites - by 19th century Mongolian renowned spiritual leader and Great saint of the Gobi Danzanravjaa were preserved secretly by seven generations of curators until the period of democratic reforms in 1990, when the last of these, Z. Altangerel, unearthed the more than 1500 objects and opened a museum on the basis of this collection. The museum has precious rare exhibits left from the Mongolian nomads as well as historic precious exhibits of other Asian countries, such as Japan, China, India and Tibet, related to history of two centuries ago.

### BURDEN SPRINGS

This is an area of great sand dunes. During periods of abundant rainfall, the spring in the centre of the sand dunes is revived and the surrounding meadow becomes green; moreover, this is an area rich in plants and wildlife. Since the 1990s treatment for kidney illness has been sought here and every year people come for treatment in the sand drinking sour camel milk.



### Ergeliin zoo

The rocks of Ergeliin Zoo Natural Reserve are World famous for its paleontological remains of Dinosaurs of the Mesozoic Era. The Natural Reserve was declared in 1996, and covers 60.900 hectares of land 30 kilometers northwest of the center of Khatanbulag Soum. The northern slope is sheer. New finds of ancient animals are reported here.



### Khan Bayanzurkh Mountain

This mountain is one of the seven worshipped mountain of Khalka, 1032 meter above sea level. The Bogd khan give "Khan" (king) title to this mountain in 17th century, because life and work of Danzanravga is related to this mountain. The believers think that mind of Danzanravga is located in this mountain, so people come to express their wishes. Since the 1990s increasing domestic tourists come to pray and say wishes to this mountain. In 2005 local Representative Hural decided to protect this 3710 hectare area around Khan Bayanzurkh hairkhan for "natural and historical monument".

### Suikhent Petrified Forest Monument

Suikhent Petrified Forest formed hundreds of millions of years ago in the Jurassic Period of the Mesozoic Era. The fossil forest is located 60 kilometers west of Ulgii Khiid covering 4,830 hectares of Mandakh soum of Dornogobi aimag. The Petrified Forest of Suikhent is distributed over an area 500 meters long and 800 meters wide and consists of the fallen trunks of many large trees, with logs up to 20 meters long and from 50 centimeters to 1,5 meters in diameter. It was placed under protection by Parliament Resolution No. 43 of 1996. Suikhent is a rare natural spectacle with petrified trees, which do not often occur in Mongolia.



## PROJECT BENEFICIARIES IN DORNOGOBI AIMAG (REGION)



<b>Main activity</b>	Accommodation in gers (10 gers)
<b>Additional activities</b>	Food, training and workshop facilities
<b>Location</b>	Sainshand soum, Dornogobi aimag
<b>Facilities</b>	Modern toilets, showers
<b>Travel distance from UB</b>	490 km
<b>Main attractions nearby</b>	<b>Natural:</b> Gobi desert, fossil findings <b>Cultural heritage:</b> Black mountain – Kharmin khiid <b>Living culture:</b> nomadic culture, Danzanrabja
<b>Season</b>	All year
<b>Tours</b>	<ul style="list-style-type: none"> <li>• “One day in Mongolia”, unique nomadic culture;</li> <li>• “Noyon khutagiin nutgaar”- 1-2 days culture tour about history of Ravjaa khutagt;</li> <li>• “Camel and dinosaur” tour - stone eggs, dinosaur remaining, camel riding.</li> </ul>
<b>Local guides service</b>	English, German, Russian languages guide service
<b>Food</b>	Restaurant (50 places) and bars.
<b>Excursion possibilities</b>	Hiking, trekking, camel tour, long and short days Gobi tour.
<b>Souvenir, shopping</b>	Local handmade souvenir shop.
<b>Special features</b>	Close to the Chinese border and near the Transiberian railway route.
<b>Languages</b>	English, Russian, German.
<b>Future highlights</b>	Winter tourism, 10 additional gers, organic vegetable farming, camel herd.

**Contact details**  
G.Ganbatar

**Address**  
Noyonkhutagt Avenue 31-57  
Sainshand soum, Dornogobi aimag

**Phone**  
+976-01522-23531,  
99116579, 99093629,  
99087574

**E-mail**  
ganbaa\_gobi@yahoo.de

“Gobi morning” tour camp is located 14 km from Sainshand soum and on the way road of the Hamriin khiid and Khar-uul. It has ten gers, four buildings, a restaurant and modern toilets, showers, training hall and permanent electricity.

The camp site is located in the historical and monument place of Khamariin Khiid, Husliin Khar Mountain, Shanbaliin Khiid and 108 meditation caves.



## GOBI MORNING TOUR CAMP



<b>Main activity</b>	Souvenir production.										
<b>Additional activities</b>	To develop sustainable tourism activities in local area, introduce cultural and historical heritage trail for foreign tourists, advertise national and local specific handicraft products.										
<b>Facilities partners</b>	Art shops in local centres, Tourist camps, Merry & Marhta Co.Ltd, Ulaanbaatar, Art shops border fort Zamiin Uud.										
<b>Location</b>	Building of “Baga dulaan trade” LLC, Dornogobi province, Sainshand soum, III bag										
<b>Travel distance from UB</b>	463 km										
<b>Season</b>	All year around										
<b>Products</b>	<b>Felt items</b> (souvenir camel, handbag, hat, scarf) <b>Coral crafts</b> (handbag, ring, wallet, earrings, key-chain) <b>Wicker work</b> (handbag, belt, earrings, ring, bracelet)										
<b>Products details</b>	Pure wool felt and wicker craft spun Collaborates with Batsarai LLC and export goods to international market.										
<b>Price</b>	<table> <tr> <td>Belt</td> <td>10 Euro</td> </tr> <tr> <td>Felt sleepers</td> <td>6 Euro</td> </tr> <tr> <td>Culted mat</td> <td>3- 15 Euro</td> </tr> <tr> <td>Wicker work</td> <td>1-3 Euro</td> </tr> <tr> <td>Wicker bas</td> <td>6 Euro</td> </tr> </table>	Belt	10 Euro	Felt sleepers	6 Euro	Culted mat	3- 15 Euro	Wicker work	1-3 Euro	Wicker bas	6 Euro
Belt	10 Euro										
Felt sleepers	6 Euro										
Culted mat	3- 15 Euro										
Wicker work	1-3 Euro										
Wicker bas	6 Euro										
<b>Additional products</b>	Small souvenirs										
<b>Souvenirs shopping</b>	Souvenirs, show specificities of aimag and cooperate with tourist camps for sale of products.										
<b>Future highlights</b>	Quality improvement of wool and felt making products for international tourists.										

**Contact details**  
Minjintsagaan Naidanjav,  
Head of Tsagaan lish cooperative  
Dornogobi province,  
Sainshand soum, II bag

**Phone**  
+976- 99522782

Tsagaan Lish cooperative was established in 2008 by 9 founder members now producing all kind of felt-making products like felt souvenir, felt pictures, home shoes for children and adults, boots and quilted mattress, bags and hats. Main activities are producing felt and knit products, organize training courses for felt making which can be also attended by tourists.

The following success stories of the cooperative are the key to a successful performance on the market:

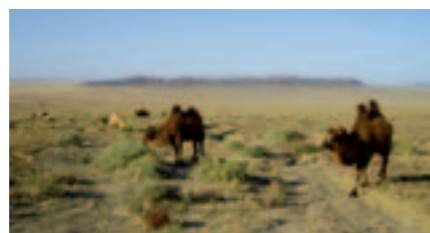
- Top product of year’ of province in 2006;
- Top product - Quilted Drugged of exhibition “Dornogobi Partnership 2008”;
- Top product of exhibition “Dornogobi business Partnership 2009”.



## TSAGAAN LISH COOPERATIVE



<b>Main activity</b>	Ger camp
<b>Additional activities</b>	Organisation of one or two days tours in the beauty and endemic nature of Gobi region, local food
<b>Location</b>	Dornogobi aimag, Sainshand soum, Bhag-2, Building 58, Suite- 06
<b>Facilities</b>	Hotel, tents, reception, toilets.
<b>Travel distance from UB</b>	500 km
<b>Main attractions nearby</b>	<b>Natural:</b> Gobi desert, fossil findings <b>Cultural heritage:</b> Black mountain – Kharmiin khiid and Noyon hutagt Danzanrabja <b>Living culture:</b> nomadic lifestyle
<b>Season</b>	Between 1 June-1 November
<b>Tours</b>	1-2 day tours
<b>Local guide service</b>	Yes
<b>Food</b>	Yes
<b>Excursion possibilities</b>	Yes
<b>Souvenir, shopping</b>	Yes
<b>Special features</b>	Beauty and endemic nature of Gobi region, Camel riding and camel milk as well as airag are available as special feature.
<b>Languages</b>	English
<b>Future highlights</b>	Expand the availability of well furnished gers and english-speaking hospitality services.



#### Contact details

B.Enkhjargal, Director

#### Address

Dornogobi aimag, Sainshand soum, Bhag-2, Building 58, Suite- 06

#### Phone

+976-99851052

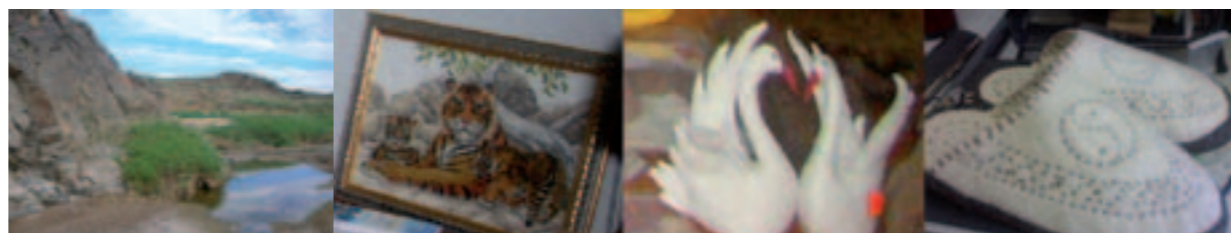
#### E-mail

bulgiin\_aylal@yahoo.com

“Tsatsiin bulag” camp is located in the beauty and endemic place of Gobi, 46 km away from Sainshand. Special plan and route maps including itineraries are available for visitors.

Camp will seasonally operating between 1st June till 1st November. It offers accommodation to 11 people on a one turn. Surroundings are endemic nature of Gobi region and offer to enjoy a stone, rock and sand which are unique formation in the area.

## TSATSIIN BULAG TOUR CAMP



<b>Main activity</b>	Handicraft product														
<b>Additional activities</b>	Sewing assistance, repair work														
<b>Location</b>	Sainshand , Dornogobi aimag														
<b>Travel distance from UB</b>	463 km														
<b>Season</b>	All year														
<b>Products</b>	Felt items (camel, swan), lamb and camel yarn socks, coral crafts (handbag, ring, scarf, earring, wallet)														
<b>Production details</b>	Pure wool felt craft, traditional clothes														
<b>Price</b>	<table> <tr> <td>Felt sleepers</td> <td>10-15 Euro</td> </tr> <tr> <td>Felt camel</td> <td>5 Euro</td> </tr> <tr> <td>Traditional puzzle</td> <td>3 Euro</td> </tr> <tr> <td>Coral handbag</td> <td>15 Euro</td> </tr> <tr> <td>Children boots</td> <td>6 Euro</td> </tr> <tr> <td>Yarn socks</td> <td>6 Euro</td> </tr> <tr> <td>Embroidery</td> <td>40 Euro</td> </tr> </table>	Felt sleepers	10-15 Euro	Felt camel	5 Euro	Traditional puzzle	3 Euro	Coral handbag	15 Euro	Children boots	6 Euro	Yarn socks	6 Euro	Embroidery	40 Euro
Felt sleepers	10-15 Euro														
Felt camel	5 Euro														
Traditional puzzle	3 Euro														
Coral handbag	15 Euro														
Children boots	6 Euro														
Yarn socks	6 Euro														
Embroidery	40 Euro														
<b>Additional products</b>	Souvenir items														
<b>Souvenirs, shopping</b>	Different kind of souvenirs.														
<b>Special features</b>	Souvenirs														
<b>Future highlights</b>	The biggest souvenir center in the heart of Dornogobi aimag.														

#### Contact details

D.Shinekhuu  
Sainshand sum, Dornogobi aimag

#### Phone

+976-99896267

Since 2000 D.Shinekhuu produces many kinds of small souvenirs by camel and sheep wool and coral.

She offers the following products:

- Raw materials: wool, felt and coral goods (trade);
- Readymade products: felt and wool products souvenirs;
- Embroidery, which show beautiful nature and wild animals.

## SHINEKHUU



<b>Main activity</b>	Accommodation and spa treatment
<b>Additional activities</b>	Local food and drinks, excursions
<b>Location</b>	Dalanjargalan soum, Dornogobi aimag, Mongolia at geographical coordinates of 45° 48' 50" North and 108° 35' 32" East.
<b>Facilities</b>	Hotel, medical facilitation
<b>Travel distance from UB</b>	By train to Station Shivee-Ovoo of Ulaanbaatar Railway, then 45 km driving by car
<b>Main attractions nearby</b>	<b>Natural:</b> the Gobi combined with surrounding hills, presence of dinosaur bones and eggs preserved for many millions years. <b>Cultural heritage:</b> pure nomadism <b>Living culture:</b> pastoral animal husbandry
<b>Season</b>	From June to September
<b>Tours</b>	Yes
<b>Local guide service</b>	Yes
<b>Food</b>	Yes
<b>Excursion possibilities</b>	Yes
<b>Souvenir, shopping</b>	Yes
<b>Special features</b>	Orientation to Eco-products, virgin landscape, fresh air, clean and high quality mineral water of health significance; fine pasture grasses and shrubs and useful medical plants; black-tailed and white gazelles, marmots, wild sheep (Argals), wolves and many types of birds.
<b>Languages</b>	English
<b>Future highlights</b>	Offering its services for foreign tourists traveling between Ulaanbaatar and Sainshand

**Contact details**  
S. Sainzaya, manager

**Address**  
Dalanjargalan soum,  
Dornogobi aimag

**Phone**  
+976-99991799

The Khalzan-Uul resort is established since 1991 as a state-owned enterprise. The chemical composition of the Khalzan Uul's spa was fully identified in 1992 as a result of a special study. The mineral waters come out from three boreholes drilled in front of Noyon Uul at the western part of Khalzan Uul. The spa is qualified as of alkaline type and tastes slightly sour due to its mineral components such as iron, copper, magnum, sulphur, radon, etc.

The resort works seasonally as indicated in the below schedule.

Months	Visitors' arrival day
June	5 15 25
July	5 15 25
August	4 14 24
September	3 13

The resort meets visitors on days indicated on the above timetable. One can arrive to the resort either from Ulaanbaatar or Sainshand in accordance with the below train schedule.

## KHALZAN - UUL ACCREDITED MINERAL RESORT



### GENERAL INFORMATION

**Territory**  
165 thousand km<sup>2</sup>  
**Population**  
48 thousand  
**Geographic position**  
South part of country, border with China



**Average altitude**  
1.300 - 1.600 m

**Travel distance from UB**  
Aimag center Dalanzadgad 600 km

**Landscapes**  
Semi desert, Gobi desert

**Economy**  
Industry (68%), livestock (30%) and others. Very rich deposits in the world of copper, gold and coal. In 2009, number of livestock reached 1.5 million. Even the territory of aimag is semi-desert with low water resource. Sown area is estimated 230 hectares and produces 3 thousand tone potatoes and vegetables annually.

**Main attractions**  
**Natural:** Bayanzag, Gobi Gurvansaikhan national park, Yoliin am valley, Khongoriin gol, Hermen tsav and Bayajikhyn Agui (cave); Sangyn Dalai Khiid in Nomgon soum, birth place of Batmunkh Dayan Khaan and camping places of Togoon Timur Khaan etc.  
**Living culture:** Nomadic lifestyle

**Flora and fauna**  
Over 250 species of flora grow in the territory. Many medical herbs, such as astragalus, gentian, flavor nitracia, cynomorium, agriophyllum, and trees such as saksaul, oleaster, populus diversifolia and elm are present in Umnugovi. Rare animals include wild horses, wild sheep, ibex, wild camels. The aimag is famous of the black tailed antelopes, white antelopes, lynxes, foxes, corsas, rabbits and badgers.

**Website**  
[www.pmisgov.mn/umnugobi](http://www.pmisgov.mn/umnugobi)



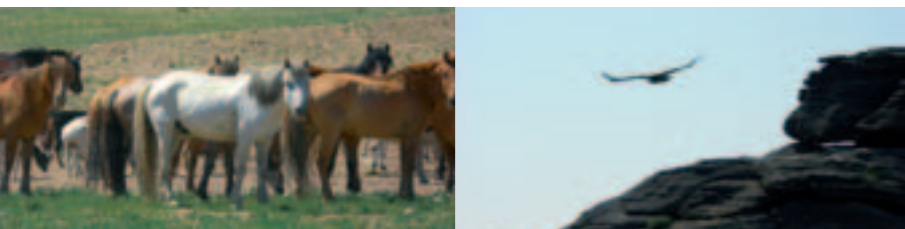
Historically, the first tourist camp with 12 gers started its activities in Khankhongor soum in 1963 and the visitors made round trips through natural sightseeing as Yolyn Am, Moltzog Els and Bayanzag and visited camel breeding herders. Last 10 years, investment in tourism industry increased a lot and the aimag had 20 tourist camps with total capacity to accept 1200 guests at once. These camps employ about 260 employees and serve 10000-15000 tourists, annually.

New tourism initiatives:

- to update the tourism master plan that will include economic forecast of tourism activities in the aimag. The aimag has built up a Tourism Advisory Council of Civil-Public-Private.
- to support joint activities of public, private and non-governmental organizations and to include their opinions in policy making process. The aimag wants to prepare a project proposal "Bayanzag Dinosaur Park".
- to develop tourist camps as ecotourism service providers like Gurvan Temee Tourist Camp. The Camp has developed its Internal Eco Role and all its employees are committed to it. The Eco Role initiative is appreciated by foreign tourists as well.



## UMNUGOBI AIMAG REGION





## MAIN ATTRACTIONS:

### GREAT GOBI NATIONAL PARK

The Mongolian Government established the Great Gobi National Park in 1975 and the UNESCO designated as the Great Gobi as the fourth largest Biosphere Reserve in the world in 1991. The area is often imagined as a lifeless desert like in many other parts of the world. Gobi Desert is a land of dinosaurs and it is the home for camel breeders rich with wildlife and vegetation. The park also contains over 200 species of birds, including the Mongolian desert finch, cinereous vulture, desert warbler and houbara bustard. The park has some 600 or more types of plants. The sparse vegetation does manage to support numerous types of animals, such as the black-tailed gazelle, Kozlov's pygmy jerboa and wild ass, and endangered species of wild camel, snow leopard, and ibex and argali sheep.



### YOLYN AM



Yolyn Am is located in 56 km from the aimag centre to the west in Zuun Saikhan Uul of the Gobi Gurvan Saikha Uul. The bottom of this beauty valley is covered by ices year around. Yolyn Am is a habitat for rare wild animals such as Yol eagle, argali (wild sheep), yangir (wild goats), snow leopards, etc. The narrow Valley between high rock walls has breathtaking dramatic scenery, and no doubt is one of the beautiful places in the country. In rainy summers hundreds of small waterfalls appear in the rocky walls. Hiking and trekking, camel, and horseback riding tours are available to the valley.

### KHONGORYN GOL (river)

The sand dunes named Khongoryn Gol is located in territory of Sevrei soum and it is 185 km long and occupies 92.5 sq. km of land. In some places, the sand dunes form 10- meters deep banks.



### Bayanzag / Flaming Cliffs

Bayanzag earned its place in history as the first spot dinosaur remains were found in Asia by US paleontologists in 1921. One of the famous places is Bayanzag, bottom of Ancient Sea which existed 60-70 million years ago where a lot of Paleontological findings have been discovered. The place is known as Flaming Cliffs so named by Roy Andrew Chapman American explorer, who had visited Mongolia in 1920. Chapman presented Mongolia one large skeleton on show in the Ulaanbaatar Natural History Museum. He found 10 kinds of dinosaurs out of which 8 were found in Mongolia.

### Hermen tsav

The Hermen tsav is a main tourist destination. Hermen Tsav is a canyon with beautiful oasis, 6 km in width and 15 km in length located in a distance of 400 km from Dalanzadgad city. The canyon is full of 30 meters high natural formations of cliffs, and looks like remains of ancient cities and temples, iceberg drifting on a sea, huge dinosaurs, turtles and crocodiles. As scientists defined it was an inland sea bottom some 200 million years ago. The first steps on this land give an impression that you have entered to the age of ancient world. Hermen Tsav is known not only by its beauty of natural formation but also by its trove of dinosaur fossils.

### Camel festival

Starting from 2002, the aimag organizes Camel Festival every year on 8th of the first Lunar Calendar Month.

Each February the camel herder people of the Gobi organize this funny and exciting event for the purpose of protect Bactrian camel. Highlights of the festival include camel races, camel polo, performances by traditional Mongolian musicians and dancers, and visits to significant paleontological and cultural sites of the Gobi. The camel festival is one real example of sustainable tourism, out of which local people get income.



## PROJECT BENEFICIARIES IN UMNUGOBI AIMAG (REGION)



GER CAMP



HANDICRAFT



HERDER COOPERATIVE

<b>Main activity</b>	Accommodation in gers (capacity:30 gers for 60 people)
<b>Additional activities</b>	Food, organise tours and special events
<b>Location</b>	Bulgan soum, Umnugobi aimag
<b>Facilities</b>	Modern toilets and showers
<b>Travel distance from UB</b>	580 km
<b>Main attractions nearby</b>	<b>Natural:</b> Bayanzag, Mongolian Gobi, Gobi Curvansaikhan mountain, Yoliin am valley, Khongoriin gol <b>Cultural heritage:</b> Various stones <b>Living culture:</b> Nomadic daily lifestyle
<b>Season</b>	April to September
<b>Tours</b>	“Stone Culture Tour” [1,2,3 day tours], by car, camel and bicycle including: <ul style="list-style-type: none"> <li>• Visit natural museum • Experience in nomadic lifestyle</li> <li>• Horse and yak riding • Overnight in a ger</li> <li>• Enjoy with paleontology findings</li> <li>• Souvenirs made in stones • Enjoy with fossil wood</li> <li>• Traditional meals behind a stone table,</li> <li>• Watch a beauty of Gobi stones</li> <li>• Rest and enjoy national songs • Fire celebration.</li> </ul>
<b>Local guide service</b>	Yes
<b>Vehicle rental service</b>	Yes
<b>Tourist info center</b>	Yes
<b>Other services</b>	International phone call
<b>Food</b>	“Turtle” restaurant: European and Mongolian dish
<b>Excursion possibilities</b>	Yes
<b>Souvenir, shopping</b>	Stone made souvenirs
<b>Special features</b>	10% of income is devolved to environmental protection initiatives like tree planting. Particular attention to include local people in services and supplies
<b>Languages</b>	English
<b>Future highlights</b>	Development of cultural trail tours

**Contact details**  
Mr. Munkbat Tseveen

**Address**  
Bulgan sum  
Umnugobi aimag

**Phone** +976 015322 2130  
**Fax** +976 0153223434  
**Mobile** +976-99048099  
+976-99539988

**E-mail**  
byanzag@yahoo.com

**Website**  
www.gobitour.mn

Bayanzag Tourist camp is located in Bayanzag, in Bulgan soum, Umnugobi aimag, famous for the “Flaming cliffs” a local protected area, rich of Palaentology findings, main attraction place in Gobi which all tourists visit. It is a worldwide renowned dinosaur fossils site roamed by dinosaurs 70 mln year ago. In 1920s Americans discovered here the first ever dinosaur egg nests and remains of a number of unknown dinosaur species. Distance from this place to Yoliin am valley is 110 km, Khongoriin gol is 150 km. The tourist camp has modern toilets and showers, power supply 220 watts and gers are supplied with solar power.

The company’s mission is to favour the eco environment Bayanzag and create a tourism brand product which is based on nature and successfully organizing cultural trail tours, aimed at highlighting ancient history through stones and fossil remains.

## BAYANZAG TOURIST CAMP



<b>Main activity</b>	Accommodation in gers (30 gers for 70 people)
<b>Additional activities</b>	Package tours, events organization
<b>Location</b>	Khankhongor soum, Gobi Gurvan Saikhan Mountain Range, South-Gobi aimag
<b>Facilities</b>	Modern toilets and showers, electricity generated by solar and wind power, own well with pure water
<b>Travel distance from UB</b>	580 km [SW]
<b>Main attractions nearby</b>	<b>Natural:</b> Gobi desert, Gobi Altai mountain range, Yol ice valley, Bayanzag (dinosaur’s fossils), Hongoryn Els (Singing sand dune), Gegeet Canyon etc <b>Cultural heritage:</b> ruins of the monastery, rock carving <b>Living culture:</b> experience nomadic daily life
<b>Season</b>	Late april - september
<b>Tours</b>	<ol style="list-style-type: none"> <li><b>1. Mysterious Gobi</b> - Enjoy unforgettable sunrise &amp; sunset and watching stars while travelling through Gobi desert area</li> <li><b>2. Experience the Great Gobi</b> - Taste the desert nomads lifestyle and learn their culture and tradition. In this program, the visitor will become one of the nomads family member and participate in his daily life</li> <li><b>3. Mongolian horses</b> - Participate in horse programs including mare’s milking, making fermented milk(airag), horse catching, training, riding, transportation and making ropes and some other things made of horse hair.</li> <li><b>4. Magic of the plants</b> - Let’s learn from the traditional way of using the medical plants. You shouldn’t miss the chance to take the photo of beautiful Gobi flowers</li> </ol>
<b>Local guide service</b>	Yes
<b>Vehicle rental service</b>	Yes
<b>Excursion possibilities</b>	Yes
<b>Tourist info center</b>	Yes
<b>Other services</b>	Internet access, International phone call, Fax
<b>European &amp; Mon food</b>	Traditional ger restaurant
<b>Souvenirs, shopping</b>	Yes (good selection & good price)
<b>Special features</b>	Award winning camp, particular attention on sustainability issues, minimising environmental impact and employing local workforce, outstanding location (away from other camps)
<b>Languages</b>	English
<b>Future highlights</b>	Particular attention dedicated to the development of above mentioned tours

**Contact details**  
Khankhongor sum  
South gobi aimag

**Phone/Fax**  
+976 015322 3904,  
98993904(text msg)

**Mobile**  
+976 99084988, 99033988,  
99184809

**E-mail**  
info@gobimirage.mn

**Website**  
www.gobimirage.mn

The “Gobi Mirage” tourist camp was established in 2005 and is located in main tourism area Umnugobi aimag, receiving foreign visitors from April to September with supply of accommodation, food and additional services. It has an ideal location that allows an easy access to the main attractions of the Gobi and to the local airport, all within an hour driving. Gobi Mirage camp is ideally suited for those who’d like to visit the Gobi Desert, serve foreign and domestic visitors by offering all the best services such as introducing nomadic lifestyle and most of the attractive places in the Gobi area. The camp accommodates and serves 70 to 80 people at once in 30 traditional gers that will let you experience the nomadic lifestyle and relax at the same time. We have ger restaurant with 70 seats, all modern facilities and hot shower. Our camp supply is with the solar power system. Awarded 2 times “Best organization in tourism sector of Umnugobi aimag” in 2006, 2008. In 2007 received “One flower” category from Ministry of Tourism and Environment. Awarded as ‘Best Ger Camp-2009’ of Mongolian Tourism Association.

## GOBI MIRAGE TOURIST CAMP



<b>Main activity</b>	Accommodation in gers (capacity 20 gers for 60 people)
<b>Additional activities</b>	Information center, horse and camel riding, visiting nomads and experience their unique lifestyle, archery, play national games, traditional cuisine service such as horhög and boodog, souvenir shop, sauna and basketball and volleyball field.
<b>Location</b>	Bayanzag, Bulgan soum, Umnugobi aimag
<b>Facilities</b>	Modern toilets and showers, electricity, communication facilities
<b>Travel distance from UB</b>	580 km
<b>Main attractions nearby</b>	<b>Natural:</b> Bayanzag area, Yoliin am <b>Living culture:</b> nomadic lifestyle
<b>Season</b>	May- September
<b>Tours</b>	Organise tours around Gobi area, special tour "Local family in Gobi" including: <ul style="list-style-type: none"> <li>• camel riding,</li> <li>• introduction to traditions and history,</li> <li>• visit of local herder family,</li> <li>• dismantling the ger and loading on a camel,</li> <li>• stay in a ger,</li> <li>• wearing Mongolian traditional clothes Deel,</li> <li>• eating traditional meals,</li> <li>• milking goat and female camel</li> <li>• herd and water livestock,</li> <li>• play the Mongolian traditional games,</li> <li>• arching.</li> </ul>
<b>Local guide service</b>	Yes
<b>Food</b>	Restaurant for 60-70 people, Mongolian and European dishes
<b>Excursion possibilities</b>	Yes
<b>Souvenirs, shopping</b>	Yes
<b>Special features</b>	Homestay with a Mongolian family
<b>Languages</b>	English
<b>Future highlights</b>	5 new high-class gers, new small hotel with 20-25 beds.

**Contact details**  
Odontuya.Kh

**Address**  
Shonkhor gobi LLC  
Dalanzadgad, Umnugobi

**Phone**  
+976-11- 99093235, 99813704  
**Fax**  
+976-11687616

**E-mail**  
kh.odnoo\_1111@yahoo.com  
gobitour\_bayanzag@yahoo.com

**Website**  
www.gobitourcamp.com

The "Gobi tour" tourist camp is a full service tour camp, catering for domestic and foreign visitors. The camp was established in 2007. It is located in the famous dinosaur fossil preserving site called Bayanzag in Bulgan province in South Gobi.

Bayanzag has unique natural formation and it is considered to be the first place where the dinosaur eggs were found in the world. Due to the good location, it is possible to do hiking and see the dinosaur sites where the fossils and primitive imprints are preserved.

By the geographical location, it is 44°07'20.5" in the northern latitude and 103°43'44.4" in the eastern longitude.

## GOBI TOUR CAMP



<b>Main activity</b>	Accommodation in gers (capacity: 45 ger for 120 people), food
<b>Additional activities</b>	Information center, sauna, swimming pool, demonstration of national arts, travel / horse and camel riding, travel by cars/, arching, rent a car, play ground for tourists, room service in ger, laundry, rent of bicycle.
<b>Location</b>	Bayanzag, Bulgan soum, Umnugobi aimag, 'Mongolian gobi 2' luxury tourist camp is located in Khongor sand dunes, chain hotel located in Mandalgobi province.
<b>Facilities</b>	Modern toilets and showers, electricity through solar energy
<b>Travel distance from UB</b>	480km
<b>Main attractions nearby</b>	<b>Natural:</b> Bayanzag red cliffs and saxual, Moltsoog sand dunes, Tugrugyn shiree little sand dunes, Khongor largest sand dunes in mongolian, Yol value, Khadat spa. <b>Cultural heritage:</b> Bayanzag the Flaming Cliffs for exploring the Gobi "Cradle of Dinosaurs" and the trail of Roy Chapman Andrews. Nomadic daily life form, wilderness, tradition custom.
<b>Season</b>	April to September
<b>Tours</b>	<ul style="list-style-type: none"> <li>• Bayanzag trekking,</li> <li>• Horse&amp;camel cart, riding,</li> <li>• Nomadic daily life tour,</li> <li>• Jeep tour,</li> <li>• Nature tour,</li> <li>• Gobi marathon.</li> </ul>
<b>Local guide service</b>	English, Korean, Russian languages guide service
<b>Food</b>	Restaurant (100 places), pub and bar
<b>Excursion possibilities</b>	Hiking, trekking, bicycle tour, camel cart trip, jeep tour, shipping tour and long and short days gobi tour,
<b>Souvenirs, shopping</b>	Souvenir shop: national dresses and games, traditional compliment gifts, and mongolian traditional art
<b>Special features</b>	Gobi marathon, camel cart trips, we will prepare all services of travel.
<b>Languages</b>	English
<b>Future highlights</b>	Our new service is sand sled and skate, sand healthy tour.

**Contact details**  
B.Amgalanbaatar  
"Gobiin ogooj" LLC

**Address**  
Umnugobi aimag, Bulgan soum, Bayanzag - Chingeltei district, 6 th horoo, Sukhbaatar street 13, Building "Hobby tour" company, room # 9

**Phone**  
+976 99118102,98988102,990 13249,99092302, 11318278

**E-mail**  
amzayanaa@yahoo.com  
info@mongolgobi.com

**Website**  
www.mongolgobi.com

The "Mongolian Gobi" Luxury tourist camp is full service tour chain camp in Mongolia. We receive foreign and domestic visitors, organize all kind of travel activities to Bayanzag and Gobi region while at the present we introduce tourists to Gobi sand dunes destinations in Mongolia. The tour camp "Mongolian Gobi 1" has 37 Mongolian gers, 8 luxury gers with toilets. Total capacity 100-120 tourists in one shift. Solar energy is used for electricity supply. The camp received "two flowers" in 2007, and was awarded "Leader tourist camp of Mongolia" which stands for the best tourist camp in Mongolia 2008. Mongolian Gobi organizes the "Gobi Marathon", a 21-42 km competition, and offers tours by camel cart. "Mongolian Gobi 2" section luxury tourist camp is located nearby largest sand dunes of Mongolia. Travel distance from "Mongolian gobi 1" is 150km.

## MONGOLIAN GOBI TOURIST CAMP



<b>Main activity</b>	Accommodation in gers (50 beds in summer and 30 in winter)
<b>Additional activities</b>	Food production (green house), horse and camel riding
<b>Facilities</b>	Internet Center, tire repair shop, food shop
<b>Location</b>	Bulgan Soum Center, Umnugobi aimag
<b>Travel distance from UB</b>	600 km
<b>Main attractions nearby</b>	<b>Natural:</b> Hadat (natural spa, rock inscriptions 18th century), Bayanzag (dinosaur's fossils), <b>Cultural heritage:</b> Tsagaan Ders ("The story of the weeping camel" film site) <b>Living culture:</b> Camel Festival (February), Tomato Feast (September)
<b>Season</b>	All year round
<b>Tours</b>	Tours including: <ul style="list-style-type: none"> <li>• See the natural landscape and environment,</li> <li>• Taste the desert nomadic lifestyle and learn about their culture,</li> <li>• Participate in the Mongolian games (camel polo, ankle, cheese),</li> <li>• Participate in the Mongolian ceremony (Wedding, Lunar New year, Camel festival, Tomato feast),</li> <li>• To stride (tracking) and to ride (camel and horse).</li> </ul>
<b>Local guide service</b>	Yes
<b>Other services</b>	Fax, developing photos, copying and printing materials
<b>Food</b>	Ger restaurant
<b>Excursion possibilities</b>	Yes
<b>Souvenirs, shopping</b>	Yes (souvenirs made by cooperative members)
<b>Special features</b>	Tourists can participate in local activities, games and ceremonies
<b>Languages</b>	English and Russian
<b>Future highlights</b>	Renew ger hotel and build 10-15 comfortable gers, professional guiding

#### Contact details

Ts Poli

#### Address

4-7, Halgait street,  
Bulgan Soum Center,  
Umnugovi aimag

#### Phone

+976-98227273

#### Fax

+976-811-134

#### E-mail

treepool\_06@yahoo.com  
gts\_7273@yahoo.com

Ankhsan Cooperative was established in 2001 with 12 members and it's located in Bulgan sum of Umnugobi aimag. Our main activities are Ger services for foreign and domestic tourists under beautiful scene of nature and running livestock and plantation. Ger camp of cooperative is located in crossroad of main roads, which are directed towards main tourism areas of Gobi. It offers accommodation to approximately 30 person in winter, 50 person in summer in Mongol gers, Mongolian tent and herders town. The service center features a restaurant catering for up to 100 people. 1-2 days natural and cultural tours (up to 20-30 people) on camel and horseback can be organized to places with historical, cultural, archeological and paleontological findings (dinosaurs' eggs). On request, visitors can participate in everyday lifestyle of herders and peasants of Gobi and live/stay there for 1-2 days. Ankhsan Cooperative annually receives 600 guests in its hotel gers and serves almost 1600 guests with meal and other services. The cooperative has 2 green houses: traditional and modern Korean, which grow cucumber, tomatoes, watermelon. They also grow fruit trees in Gobi desert.

## PROJECT B

# ANKHSAN COOPERATIVE



<b>Main activity</b>	Ger accommodation (capacity: 6 gers for 20 people)
<b>Additional activities</b>	Food, souvenirs, horseback riding
<b>Location</b>	"Shiveetiin hond" 34 km Dalanzadgad
<b>Travel distance from UB</b>	634 km
<b>Main attractions nearby</b>	<b>Natural:</b> National protected area Gobi Gurvan saikhan mountain near Yoliin Am canyon <b>Living culture:</b> nomadic lifestyle: <ul style="list-style-type: none"> <li>• Live in Mongolian ger with herder family;</li> <li>• Participate in livestock work, milk processing;</li> <li>• Participate traditional events in herder household (Lunar new year, rearing the offspring, horse-breaking, loud camel, horse and ox cart);</li> <li>• Play Mongolian national games.</li> </ul>
<b>Season</b>	May-September
<b>Tours</b>	Horse and camel riding short tours
<b>Local guide service</b>	Yes
<b>Food</b>	Yes
<b>Excursion possibilities</b>	Yes
<b>Souvenirs, shopping</b>	Felt and wooden souvenir and Mongolian National costumes made by cooperative members
<b>Languages</b>	English and french
<b>Future highlights</b>	Add new traditional gers

#### Contact details

B.Amgalanbaatar  
"Gobiin ogooj" LLC

#### Address

Umnugobi aimag, Bulgan soum,  
Bayanzag - Chingeltei district, 6  
th horoo, Sukhbaatar street 13,  
Building "Hobby tour" company,  
room # 9

#### Phone

+976 99118102,98988102,990  
13249,99092302, 11318278

#### E-mail

amzayanaa@yahoo.com  
info@mongolgobi.com

#### Website

www.mongolgobi.com

"Malchinii hothon" cooperative was established in 2005 and is located in Hanhongor soum, Umnugobi aimag. Main activities are service to the foreign tourists by providing ger accommodation, food and milk products and sell souvenir which are made by cooperative members. Mongolian herder life and nomadic lifestyle are attracting foreign tourists. If you visit our cooperative you can see and test by yourself:

- Milk processing: dried curd making, cheese making, formation of cream layer, milk boiling and yogurt making,
- Livestock work: saddle one's horse, riding horses, bind together sheets, sheep shearing milk animals
- Nomadic lifestyle: build ger, beat wool, felt making and others.

# MALCHINII HOTHON COOPERATIVE



<b>Main activity</b>	Handmade traditional items
<b>Additional activities</b>	Sewing assistance and training
<b>Location</b>	Dalanzadgad soum, Umnugobi aimag
<b>Travel distance from UB</b>	600 km
<b>Season</b>	All year
<b>Products</b>	Mongolian traditional items: bowl and snuffbottle pouches, traditional waistcoats
<b>Production details</b>	Mongolian national clothes, shuff- box and bowl pouches made of silk and wool material decorated by traditional fancy needlework.
<b>Price</b>	Bowl puch 20 USD Shuffbox pouch 20-30 USD Vest 50 USD
<b>Additional products</b>	Mongolian national dress, male/female deel, shift, other handicrafts
<b>Souvenirs</b>	Camel, pouch for 4 anklebones, scarf
<b>Special features</b>	Traditonal clothes (Mongol deel), souvenirs, bags
<b>Future highlights</b>	Establish training centre for disabled people.

**Contact details**  
Ouyndelger B.

**Address**  
Baga-Uul 2-4  
Dalanzadgad soum  
Umnugobi aimag

**Phone**  
+976-996744579, 98622233

Since 1993, she started her activity to make traditional items. She wants to deliver traditional method how to make national items to the young generation. She established an Association of disabled people providing training to sustain unemployed disabled people.

The bowl and snuffbottle pouches, traditional waistcoats made by Ms.Ouyndelger are very famous not only in Umnugobi even in Mongolia.

She was awarded several times from National and regional competition and exhibitions.



## GURVAN UUL HANDICRAFT



## TOURISM CONTACT DETAILS IN MONGOLIA

Name of the Organization	Address	Contact Person
<b>GOVERNMENT ORGANIZATION</b>		
Tourism Department, Ministry, of Nature Environment and Tourism, Mongolia	Government Building-2, United Nation's street-5/2, Ulaanbaatar, Mongolia Tel/Fax: 976-51-264447 Web: www.mongoliatourism.gov.mn e-mail: battulga@mongoliatourism.gov.mn	General Director Orgodol Tseden
Mongolian National Tourism Center, State owned enterprise	Discover Mongolia Building, 2nd floor, Chinggis avenue-11, Ulaanbaatar, mongolia Tel: +976-11-330675 - Fax: +976-11-330778 Web: www.mongolia-tourism.mn e-mail: molor@mongolia-tourism.mn P.O.Box-2345, index 211213, Central Post Office	General Director Purevsuren Gombosuren
<b>NON GOVERNMENT ORGANIZATION</b>		
Magic Gobi	Governor office, Dalanzadgad city, Umnugobi aimag, Mongolia Mobile: +976-99025689 e-mail: ono_129@yahoo.com web: under construction	Executive Director Mr. Tumendelger
Hustai National Park	P.O.Box 1160, Central Post Office, Ulaanbaatar-13, Mongolia Tel/Fax: 976-21-245087 Web: www.hustai.mn e-mail: takhi@hustai.mn	Director Bandi.N
Mongolian National Tourism organization	Shine Tugul Complex, D block, 1st entrance, Chinggis avenue-19/1, Ulaanbaatar, Mongolia Tel/Fax: +976-70111334 Web: www.mnto.org e-mail: info@mnto.org	Executive Director Erdenechimeg Batmunkh
Mongolian Tourism Association	The trade Union confederation building room#318, 319 Sukhbaatar Square 11, Ulaanbaatar, Mongolia Tel: +976-70123026 Fax: +976-11-327820	Vice President Erdenebat.N
Rural Investment Support Center	Post Box 24/133, Ulaanbaatar 210524, Mongolia, Tel:+976-99243305 e-mail:shombodon@yahoo.com bnamsrai01@yahoo.com Website: www.risc.org.mn	Chairperson of Governing Body Shombodon Dorlig Executive Director Namsrai Batmunkak

Name of the Organization	Address	Contact Person
<b>REGIONAL LEVEL ORGANIZATION</b>		
Nature, Environment and Tourism Department, Arhangai aimag	Governor office, Tsetserleg city, Arhangai aimag, Mongolia Mobile: 976-93031011 e-mail: tsevgeed99@yahoo.com	Tourism Officer Mr.Tseveldorj
Nature, Environment and Tourism Department, Bayan-Ulgii aimag	Governor office, Ulgii city, Bayan-Ulgii aimag, Mongolia Mobile: 976-93011995 e-mail: d_aybek85@yahoo.com	Tourism Officer Mr.Aibek
Nature, Environment and Tourism Department, Bayanhongor aimag	Governor office, Bayanhongor city, Bayanhongor aimag, Mongolia Mobile: 976-93017811 e-mail: d.samdan@yahoo.com	Tourism Officer Mr.Sodnomsamdan
Nature, Environment and Tourism Department, Bulgan aimag	Governor office, Bulgan city, Bulgan aimag, Mongolia Mobile: 976-99299547 e-mail: tsjanaa_02@yahoo.com	Tourism Officer Ms.Ganchimeg
Nature, Environment and Tourism Department, Govi-Altai aimag	Governor office, Altai city, Govi-Altai aimag, Mongolia Mobile: 976-93016408 e-mail: jagaa303@yahoo.com	Tourism Officer Ms.Jargaltsetseg
Nature, Environment and Tourism Department, Govisumber aimag	Governor office, Choir city, Govisumber aimag, Mongolia Mobile: 976-99022292 e-mail: boogii_bg@yahoo.com	Tourism Officer Mr.Boldsaihan
Nature, Environment and Tourism Department, Dornod aimag	Governor office, Choibalsan city, Dornod aimag, Mongolia Mobile: 976-93013496 e-mail: ganzoo20@yahoo.com	Tourism Officer Mr.Ganzorig
Nature, Environment and Tourism Department, Dornogobi aimag	Governor office, Sainshand city, Dornogovi aimag, Mongolia Mobile: 976-93027028 e-mail: b_nasanjargal99@yahoo.com	Tourism Officer Ms.Nasanjargal
Nature, Environment and Tourism Department, Dundgobi aimag	Governor office, Mandalgobi city, Dundgovi aimag, Mongolia Mobile: 976-95731707 e-mail: ankhaa0217@yahoo.com	Tourism Officer Ms.Anhbayar
Nature, Environment and Tourism Department, Zavhan aimag	Governor office, Uliastai city, Zavhan aimag, Mongolia Mobile: 976-93064466 e-mail: jbn_mgl@yahoo.com	Tourism Officer Mr.Javhlan
Nature, Environment and Tourism Department, Orhon aimag	Governor office, Erdenet city, Orhon aimag, Mongolia Mobile: 976-99046693 e-mail: oogiiino_8312@yahoo.com	Tourism Officer Ms.Osorjamaa

Name of the Organization	Address	Contact Person
Nature, Environment and Tourism Department, Uvurhangai aimag	Governor office, Arvaiheer city, Uvurhangai aimag, Mongolia Mobile: 976-93077766 e-mail: magnai_0612@yahoo.com	Tourism Officer Mr.Bayarmagnai
Nature, Environment and Tourism Department, Umnugobi aimag	Governor office, Dalanzadgad city, Umnugobi aimag, Mongolia Mobile: 976-88095584 e-mail: nburmaa59@yahoo.com	Tourism Officer Ms.Burmaa
Nature, Environment and Tourism Department, Suhbaatar aimag	Governor office, Baruun-Urt city, Suhbaatar aimag, Mongolia Mobile: 976-93084338 e-mail: bold8408@yahoo.com	Tourism Officer Mr.Ariunbold
Nature, Environment and Tourism Department, Selenge aimag	Governor office, Baruun-Urt city, Suhbaatar aimag, Mongolia Mobile: 976-96360000 e-mail: amorido79@yahoo.com	Tourism Officer Mr.Sodhuu
Nature, Environment and Tourism Department, Tuv aimag	Governor office, Zuunmod city, Tuv aimag, Mongolia Mobile: 976-88005011 e-mail: jbat_999@yahoo.com	Tourism Officer Mr.Battogtoho
Nature, Environment and Tourism Department, Uvs aimag	Governor office, Ulaangom city, Uvs aimag, Mongolia Mobile: 976-98081101 e-mail: n_nyambat@yahoo.com	Tourism Officer Mr.Nyambat
Nature, Environment and Tourism Department, Hovd aimag	Governor office, Hovd city, Hovd aimag, Mongolia Mobile: 976-99715871 e-mail: moogii_doogii@yahoo.com	Tourism Officer Ms.Munhdolgor
Nature, Environment and Tourism Department, Huvsgul aimag	Governor office, Murun city, Huvsgul aimag, Mongolia Mobile: 976-99389835 e-mail: dulamsuren99@yahoo.com	Tourism Officer Ms.Dulamsuren
Nature, Environment and Tourism Department, Hentii aimag	Governor office, Undurhaan city, Hentii aimag, Mongolia Mobile: 976-99014921 e-mail: bayasgalan_jt@yahoo.com	Tourism Officer Ms.Bayasgalan
Darhan-Uul aimag	n/a	n/a

# INNER MONGOLIA AUTONOMOUS REGION, CHINA

The Chinese Inner-Mongolia Autonomous Region (called Inner Mongolia for short), is located in the north of China bordering with eight provinces and autonomous regions of China, that lie to its east, south, and west respectively. To its north lie Mongolia and Russia. Inner Mongolia covers an area of 1,183,000 square kilometers and has a population of 22,840,000, which is composed of 49 nationalities. Hohhot, the capital of Inner Mongolia, is the political, economic, cultural and tourist center of the autonomous Chinese region. Many ethnic groups are living in this area including Mongolian, Daur, Oroqen, Ewenki, Hui, Han, Korea and Manchu. Hohhot is the capital of Inner Mongolia.



Climate in Inner Mongolia is very different during the year. Winter is cold and can be very long, with frequent blizzards. Usually summer is short and warm. The climate changes from arid to semi-humid from west to east, and to humid in the northeast. The annual rainfall is 80 - 450 millimeters, also increasing from west to east. The main feature of the climate here is that the difference in temperature between days and nights is very big, so tourists should wear layer of clothes when travelling here.



## THE GRASSLANDS. WHEN SUMMER COMES...

Inner Mongolia contains the grassland of 880,000 square kilometers. When summer comes, the vast Inner Mongolia Prairie is extremely beautiful. On the green grassland the flowers of various colors are growing attractively and the rivers and streams wind their way cheerfully like white satin. Car-driving tour, motor-riding tour, cycling tour, train-taking tour and other forms of traveling on the Inner Mongolia Prairie are provided for tourists. In this season, a lot of visitors come here for sightseeing.

Galloping on horseback in the fields, walking on the flower-covered grassland, having a picnic in the open air... All this surely makes the tourists feel more relaxed and pleased than any other form of recreation.



## THE DESERTS

In the areas of Badanjilin Desert, Tengger Desert and Kubuqi Desert, which are all located in the west of Inner Mongolia, such new tours as the tour of walking across the desert and the tour of crossing the desert by riding camels have been provided for the tourists.

Early autumn (from the middle of August to the end of September) is the best time to explore the desert as the temperatures are very temperate.

Camel riding tours are offered through desert itineraries.



## LONG HISTORY AND CULTURE

Inner-Mongolia has strong cultural background promoting both Chinese culture and preserving the Mongolian culture its dances songs, music, dress and personal adornment, food and drink, sports and festivals all reflect the unique customs and manners of the Mongolia people. They are well received by the tourists coming from home and abroad.

Inner Mongolia has a peculiar natural scenery, long history and brilliant culture. There are many historic sites in this area. Some of the key historic sites include:

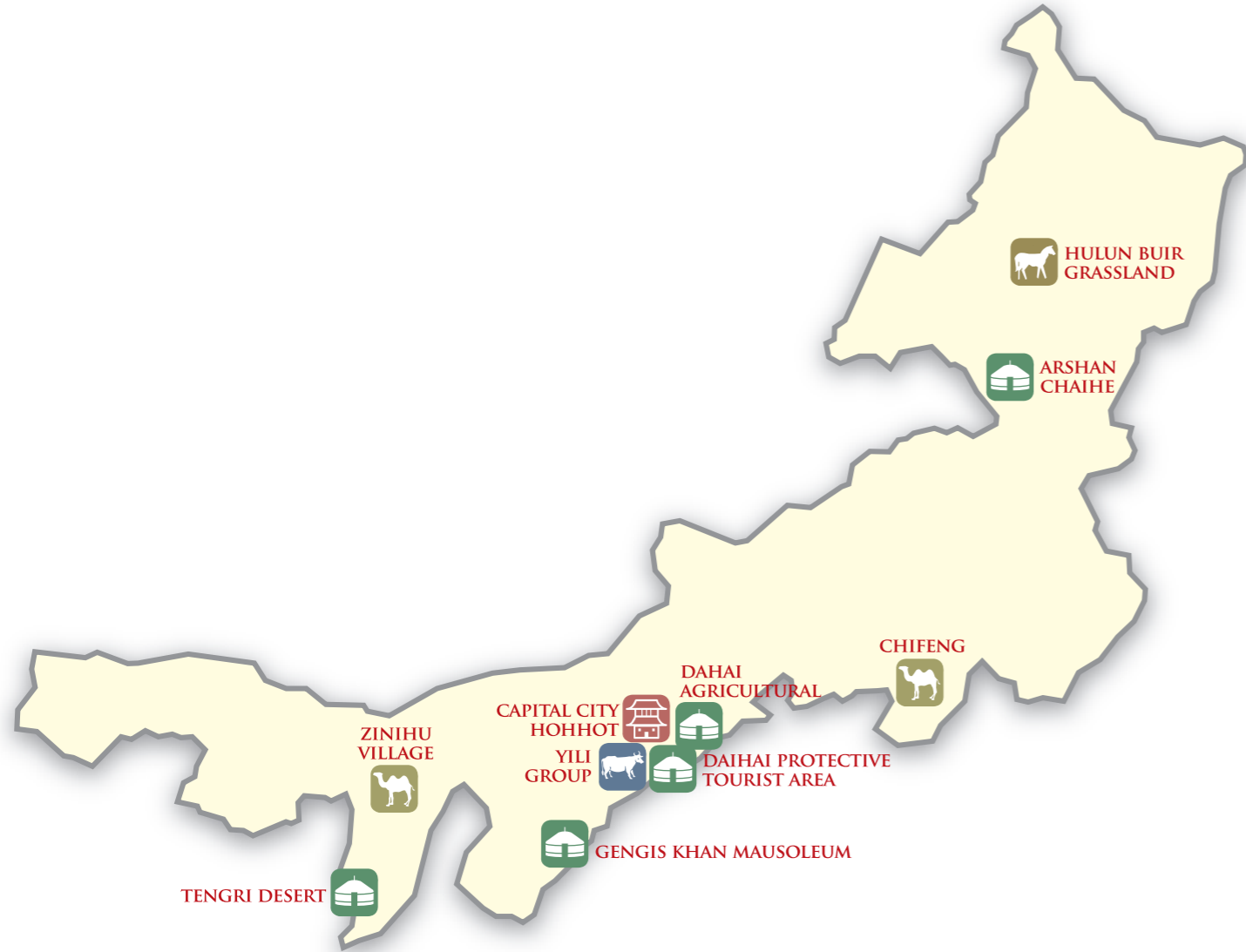
- Wudangzhao Monastery in Baotou is a vast complex and used to be the residence of the highest ranking lama in Inner Mongolia and now it is the only intact Tibetan Buddhist monastery in Inner Mongolia. Inner Mongolia is the hometown of Genghis Khan the Heavenly Generation, the great leader of Mongolians. His Mausoleum, located 185 kilometers (about 71 miles) south of Baotou, holds his clothing buried in his memory.
- Dazhao Temple is one of the biggest and best-preserved temples in Hohhot. Xilituzhao Palace is the largest surviving Lama temple in Hohhot.
- Zhaojun Tomb, six miles to the south of Hohhot, is located on one of the most beautiful scenes of ancient times. A legend says that each year, when it turned cold and grass became yellow, only this tomb remained green and so it got the name Green Tomb (Qing Zhong).
- Wudang Lamasery a temple that comprises of 2,538 halls and rooms, covering some 200,000 square meters of land. The major architecture includes 10 halls and 94 dwelling buildings for lamas. According to statistics, the Wudang Lamasery houses more than 1,500 statues of Buddha made of various types of materials including gold, silver, copper, wood and earth.

Inner Mongolia has good facilities for tourism. The major tourist cities are all equipped with star-level hotels and other necessary facilities. These cities have good airline service. It's convenient for the tourists to go to Hohhot, Beijing and other cities of the country by air. Now in Inner Mongolia there are 108 star-level hotels, including two five-star-level hotels, three four-star-level hotels and 23 three-star-level hotels. There are 142 travel services, including 29 international and 113 national ones.





# PROJECT BENEFICIARIES IN INNER MONGOLIA (REGION)



-   
HERDER COOPERATIVE
-   
GER CAMP
-   
CULTURAL HERITAGE
-   
DIARY PRODUCTS
-   
HERDER COOPERATIVE

## GENERAL INFORMATION

**Location**  
In Tumd Plain which is in the middle of Inner Mongolia Autonomous Region

**Population**  
2,6 million

**Position territory**  
Political, economic and cultural center of Inner Mongolia 17.2 thousand km<sup>2</sup>

**Average altitude**  
1.000 - 1.200 m

**Travel distance from Beijing**  
500 km

**Economy**  
Cow breeding industry has become the pillar industry of Hohhot; dairy products have more than 50% share in the country's market. The industry economy includes dairy, power, information, biological pharmacy and equipment manufacturing. The service industry has become an important to promote the city's economic development. Tourism, logistics, finance, social intermediary, catering, accommodation and business flow etc. keep a relatively high increasing speed.

**Climate**  
In the inland of the middle temperate zone the annual average temperature is 8°C.

**Transportation**  
Domestic flights to the main cities in China International flights to Ulaanbaatar of Mongolia and Chita of Russia Railway links with Beijing, Chengdu, Guangzhou, Ningbo, Harbin, Lanzhou, Hailar, etc. Long distance buses to big cities in adjacent provinces.

**Main attractions**  
**Dazhao Lamasery**  
Situated in Yuquan District of Hohhot City, the Dazhao Lamasery is also called - Wuliang Temple (the temple of infinity) - in Chinese. Built in Ming Dynasty, the Dazhao Lamasery is the first lamasery in Hohhot. It has been the center of Lamaism activities in Inner Mongolia for hundreds of years and is one of the most famous lamaseries in the north of China.

**Five Pagoda Temple**  
Situated in Yuquan District of Hohhot City, it was originally named - Ci Deng Temple - and built in the reign of Yongzheng of Qing Dynasty. There are five square pagodas on the hall and the down parts of the pagodas are inscribed with Buddhist scriptures in Mongolian, Tibetan and Sanskrit. In the back of the hall there is a star atlas in a diameter of 144.5cm. This is the only star atlas with Mongolian annotations discovered in the world and it is thus of great scientific importance.

**Zhaojun Museum**  
Located nine kilometres to the south of Hohhot city, Zhaojun Museum is a major historic and cultural site under the State protection. The main part is the mausoleum of Wang Zhaojun of the Han Dynasty and a series of monumental constructions including the palace gate of the Han Dynasty, archway of Green Grave, the tablet of Mr. Dong Biwu's poem, Heqin (marriage) Bronze Statue, Museum of Huns' culture, Great Tent of Chanyu (King of Huns) and arcade of poem tablets of past dynasties.



Hohhot, "green city" in Mongolian, is located in the middle of Inner Mongolia. Being a famous city in Chinese history and culture, Hohhot has many places of historic interest and scenic beauty within its border. Dayao Culture Site of Paleolithic Age in the eastern suburb of the city testifies that early in 700,000 years ago the ancestors had lived here. The green space of Hohhot is expanding continuously and the city upgraded and established a series of public green lands and park squares like Dazhao Lamasery Square, Nanhu Wetland Park, etc. where the green coverage has reached 33.5%. A legion of shopping malls, star hotels and high standard constructions have been or are being constructed. The upgrading of Baita International Airport has been accomplished. The city's cultural feature has obviously been improved. Both the environment of city appearance and the environment of residential area have been improved greatly.



**HOHHOT**  
THE CAPITAL CITY

<b>Main activity</b>	Cultural and eco-tourism (horse-back and camel riding).
<b>Additional activities</b>	Accommodation, field trips, local cuisine, contact with local people, bird-watching, fishing.
<b>Facilities</b>	Kitchen, toilets and solar heating.
<b>Location</b>	Zinihu Lake in Jirtai County of Alxa Left Banner, Inner Mongolia.
<b>Travel distance from Hohhot</b>	700 km
<b>Main attractions nearby</b>	Natural springs within 10 square kilometers of wetlands forming a natural reed marshes in the lower-lying areas and five natural lakes with different fish, ducks, cranes and other wild animals.
<b>Season</b>	All year around.
<b>Tours</b>	Yes
<b>Local guide service</b>	Yes
<b>Food</b>	Yes
<b>Excursion possibilities</b>	Yes
<b>Souvenirs, shopping</b>	Yes
<b>Special features</b>	Vicinity of desert and sand dunes.
<b>Languages</b>	English, Mongolian, Chinese.
<b>Future highlights</b>	Establishment of Mongolian cultural centre, new tours and itineraries, guides training, handicraft training.
<b>Contact details</b>	

**Contact details**  
Geriletu

**Address**  
Zinihu Mongolian Cultural and Ecological Village  
Jirtai County of Alxa Left Banner,  
Inner Mongolia

**E-mail**  
saren\_cai@yahoo.com.cn

Alxa League is located at the western-most end of Inner Mongolia, bordering on Gansu Province and Ningxia Hui Autonomous Region, sharing a boundary line of 735 km with Mongolia in the north.

The league has under its jurisdiction Alxa Left Banner, Alxa Right Banner and Ejin Banner, covering a total area of 270,000 km<sup>2</sup>. The total population is over 200,000 with 28 ethnic groups including Mongolian, Han, Hui, Tibetan, etc. Ceke Port bordering on Mongolia is the third largest land port in Inner Mongolia.

The salt lakes like Jirtai and Yablai in Alxa produce high-quality salt, the deposit of which ranking as first in Inner Mongolia. Among them Jirtai Salt Lake has a history of more than 200 years of mining and is the first mechanized salt mine in China.

ZINIHU MONGOLIAN CULTURAL AND ECOLOGICAL VILLAGE IN ALXA LEAGUE



<b>Main activity</b>	Nomadic life experience
<b>Additional activities</b>	Horse riding, arrow shooting, fruit picking, hunting, photographing, singing and dance performing
<b>Facilities</b>	Residential, catering
<b>Location</b>	Ulanbuton tourist developing area, Hexhicteng Banner
<b>Travel distance from Hohhot</b>	800 km
<b>Travel distance from Beijing</b>	400 km
<b>Main attractions nearby</b>	<b>Natural:</b> Ulanbuton Ancient Battlefield Hexigten Stone Forest, a world geological park <b>Historical and cultural heritage:</b> Harqin Prince's Residence of Qing Dynasty Daming Pagoda of Liao Dynasty
<b>Season</b>	All year around
<b>Tours</b>	Yes
<b>Local guide service</b>	Yes
<b>Food</b>	Yes
<b>Excursion possibilities</b>	Yes
<b>Souvenirs, shopping</b>	Yes
<b>Special features</b>	Different landscape like grassland, lakes and desert, mountains and hot springs
<b>Languages</b>	English, Mongolian, Chinese

**Contact details**

Zhao Yushan, Ulanbuton tourist developing area, Hexigten Banner, Chingfeng, China

**Phone**  
+86 13847602187

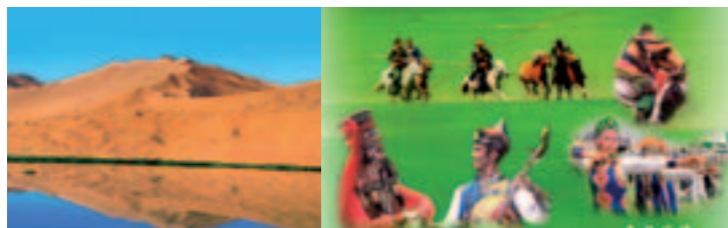
**E-mail**  
kqzys@163.com

**Website**  
www.cfly.net

Chifeng, "ulanhada" in Mongolian meaning "red mountain peak" was named after the dark red mountain peak in the northeast of the city. Located in the south-eastern part of Inner Mongolia, Chifeng has a long history and is the birthplace of Hongshan Culture and the culture of Liao Dynasty. More than 6800 cultural sites and relics of various periods of history have been found, and 13 places have been confirmed as national important historical relics under state protection.

Chifeng is rich in natural resources. Its grassland, lakes, forests, mountains, deserts, hot springs and remnants of glaciations constitute a natural museum of biological diversities, serving as an epitome of tourism in Inner Mongolia.

CHIFENG HEXIGTEN HALEY ANIMAL HUSBANDRY



<b>Main activity</b>	Holiday making, conference, entertainment and leisure.
<b>Additional activities</b>	Unique and magnificent landscape in nature and high level service.
<b>Facilities</b>	Accommodation, catering and conference.
<b>Location</b>	Tengri Desert hinterland, Alxa League, Inner Mongolia.
<b>Travel distance from Hohhot</b>	800 km
<b>Travel distance from Beijing</b>	1300 km
<b>Main attractions nearby</b>	<b>Natural:</b> the highest sand hills, the largest resonant sand area, the immense connected sand lakes and the eternal diversifolious poplar trees <b>Cultural heritage:</b> cliff paintings, Juyan Culture sites, Nansi Lamasery in Helan Mountains <b>Living culture:</b> unique social customs and traditions of the Oirad and Torgut Mongolian groups.
<b>Season</b>	Half a year (from June to October)
<b>Tours</b>	Yes
<b>Local guide service</b>	Yes
<b>Food</b>	Yes
<b>Excursion possibilities</b>	Yes
<b>Souvenirs, shopping</b>	Yes
<b>Special features</b>	Camel riding in the desert.
<b>Languages</b>	English, Chinese, Mongolian.
<b>Future highlights</b>	To create the world's top leisure resort in a unique and magnificent landscape in nature with high level service.
<b>Contact details</b>	

**Contact details**  
Lei Yongsheng

**Address**  
Tengri Desert hinterland,  
Alxa League, Inner Mongolia,  
China

**Phone**  
+86 13146500088

**E-mail**  
lys2008@126.com

**Website**  
www.moonlake.com.cn

Grand mountain, endless desert, and the holy moon lake construct the mirage of moon lake desert resort: enjoy the sunshine breakfast in the shade, step into the mountain of sand dunes by camel overlooking the moon lake, see the sunset in the desert with glass of wine, chat with friends and relatives far away from everyday life, swim in the lake with wild birds and enjoy the bonfire in the moonlight...

The moon lake is not only a destination for leisure vacation but also pure place for your heart meditation...

## MOONLAKE ECO TOURIST AREA IN TENGRI DALAI DESERT



<b>Main activity</b>	Sacrifice offering to Genghis Khan, holding memorial ceremonies, visiting Iron-horse and Golden-Tent, enjoy Mongolian song and dance drama.
<b>Additional activities</b>	Programming of horse-related cultural and scientific expos and conferences, shows, trainings, souvenirs and entertainment.
<b>Facilities</b>	Accommodation, Art exchange centre.
<b>Location</b>	Ejinhoro Banner, Erdos, Inner Mongolia.
<b>Travel distance from Hohhot</b>	360 km.
<b>Travel distance from Beijing</b>	860 km.
<b>Main attractions nearby</b>	<b>Natural:</b> resonant sand gorge, Engebei eco-tourist area, Yellow River Valley. <b>Cultural heritage:</b> Genghis Khan Mausoleum. <b>Living culture:</b> sacrifice offering ceremony to Genghis Khan.
<b>Season</b>	All year around.
<b>Tours</b>	Yes
<b>Local guide service</b>	Yes
<b>Food</b>	Yes
<b>Excursion possibilities</b>	Yes
<b>Souvenirs, shopping</b>	Yes
<b>Special features</b>	Education tour, culture tour, experience tour, ethnic tour.
<b>Languages</b>	English, Mongolian, Chinese.
<b>Future highlights</b>	Provide experience and opportunities to learn about the history of horse-back nation and to learn horse culture of herdsman's family.

**Contact details**  
Chake rima

**Address**  
Genghis Khan Mausoleum,  
Ejinhoro Banner,  
Erdos Inner Mongolia

**Phone**  
+86 477-8961222

**E-mail**  
chengjisihanling@163.com

**Website**  
www.cjshl.com

Located in the southwestern part of Inner Mongolia, Erdos means "palace of yurts" in Mongolian. In order to commemorate Genghis Khan after his death, borzign Ugedei Khan built the felt tents to keep the things Genghis Khan left behind in Kharkhorn and thus named it Erdos.

Erdos has a long history and abundant tourist resources, mainly including historical relics, Mongolian customs, desert ecology, the Yellow River valley, hot spring and rare wildlife.

The mausoleum consists of three mansions and divided into six parts: the main hall, the east and west halls, the east and west corridors and the rear hall. Large memorial ceremonies are held here every year.



## INNER MONGOLIA GENGIS KHAN MAUSOLEUM



<b>Main activity</b>	To experience the natural beauty of grassland, lakes, mountains, forests, etc; riding horses; living in the Mongolian yurts and enjoy eco-tours.
<b>Additional activities</b>	Conference, local food, ethnic customs.
<b>Facilities</b>	Accommodation, catering.
<b>Location</b>	HulunBuir, Inner Mongolia.
<b>Travel distance from Hohhot</b>	2,200 km.
<b>Travel distance to Beijing</b>	2,000 km.
<b>Main attractions nearby</b>	<b>Natural:</b> Huhnor grassland, Xishan National Forest Park, Hulun lake, Phoenix Mountain. <b>Cultural heritage:</b> Gaxian Cave, Heishantou Ancient Town. <b>Living culture:</b> Sino - Russian Mutually Beneficial Trade Market.
<b>Season</b>	All year around.
<b>Tours</b>	Yes
<b>Local guide service</b>	Yes
<b>Food</b>	Yes
<b>Excursion possibilities</b>	Yes
<b>Souvenirs, shopping</b>	Yes
<b>Special features</b>	Presentation of national culture, film and TV culture in combination with ecological tourism.
<b>Languages</b>	English, Mongolian, Chinese.
<b>Future highlights</b>	To protect the grassland and bring prosperity to the nearby farmers and herdsman, which would be an integrity of environmental, social and economic benefits of their homeland.

**Contact details**

Liu Yu'e

**Address**Jinzhanghan Tourist Area  
HulunBuir, Inner Mongolia**Phone**

+86 470-8336883

**E-mail**

jinzhanghan8019@163.cn

**Website**www.jinzhanghan.com  
www.hlbrly.gov.cn

The name of HulunBuir is a combination of the names of two sister lakes—the Hulun lake and the Buir Lake. It is located in the northeast China, bordering with Russia and Mongolia.

HulunBuir is a component of Mongolian Plateau in the middle Asia with a 49% forest covering rate. 9 kinds and 65 species of mineral resources have been proved and discovered. There are more than 1,600 categories of wild animal and plants resources, among which there are 6 classes, 36 orders, 144 families and 513 species, accounting for 12.3% of the country's total number.

With wide land area and fantastic scenery, HulunBuir has the most abundant tourist resources in Inner Mongolia. It is famous for its beautiful grasslands as well as both natural resources such as forests, rivers, lakes, snow and ice, and its cultural traditions of the Mongolian, Ewenki, Oroqin, Daur and Russian nationalities. Jinzhanghan (golden yurt in Chinese) Tourist Area, initially built up by Mr. EYonglin by self-raised funds in 1993, is located in the great Hulunbuir Grassland.

They want to protect the grassland and bring prosperity to the nearby farmers and herdsman, which would be integrity of environmental, social and economic benefits by developing tourism. The scenic area features in grassland scenery, ethnic customs, and exclusive diet culture, which can meet the needs of tourists in different levels and offers to visitor's opportunities for leisure and holidays in nature.

## JINZHANGHAN CAMPS IN HULUN BUIR GRASSLAND



<b>Main activity</b>	Guided tours around production process of dairy factory
<b>Additional activities</b>	Accommodation, local transport, food products, excursions
<b>Facilities</b>	Industrial buildings and processing equipment
<b>Location</b>	Jin Chuan Development Zone, Hohhot, Inner Mongolia
<b>Travel distance from Beijing</b>	500 km
<b>Main attractions nearby</b>	<b>Natural:</b> national forest park <b>Cultural heritage:</b> Dazhao Lamasery, Five pagoda Temple, Zhaojun Museum
<b>Season</b>	All year around
<b>Tours</b>	Yes
<b>Local guide service</b>	Yes
<b>Food</b>	Yes, dairy products
<b>Excursion possibilities</b>	Yes
<b>Souvenirs, shopping</b>	Yes
<b>Special features</b>	Industrial estate involved in tourism
<b>Languages</b>	English, Chinese
<b>Future highlights</b>	Information on tourist attractions of the site and adjacent area.

**Contact details**

Ms. Hu Hui

**Address**No.8, Jin Si Road, Jin Chuan  
Development Zone, Hohhot,  
Inner Mongolia**Phone**

+86 13848815913

**E-mail**

irene\_hui1984@163.com

**Website**

www.yili.com

Inner Mongolia Yili Industrial Group is a dairy enterprise with spirit of innovation and social responsibility. It is the only one of Chinese enterprises which is in accordance with the Olympics and World Expo standard, and supplies dairy products for the Olympics and the World Expo in succession.

Under Yili Group there are five divisions: liquid milk, ice cream, milk powder, yoghurt and raw milk. More than 1,000 series of Yili brand products are made by 130 affiliated enterprises of Yili Group.

The company cooperates with Yili group to develop industrial tourism – guided tours around the production process which is very popular instantly, because people pay more attention to their health and want to know how their daily food is made. They can get the latest information of their tourism site and have the pleasure experience of the site.

## INDUSTRY TOURISM OF YILI GROUP



<b>Main activity</b>	Tourist centre, hot spring and Huanghuagou scenic spot, excursions, guided tours, lake sightseeing.
<b>Additional activities</b>	Local food, cruise, swimming, accommodation.
<b>Facilities</b>	Hotel and villas, catering.
<b>Location</b>	Liangcheng Town, Ulanchab City.
<b>Travel distance from Hohhot</b>	120 km.
<b>Travel distance from Beijing</b>	400 km.
<b>Main attractions nearby</b>	<b>Natural:</b> Ulanchab Grassland, Daihai Lake, Huanghua Valley. <b>Historical and cultural resources:</b> great walls in Han and Ming Dynasties.
<b>Season</b>	All year around.
<b>Tours</b>	Yes
<b>Local guide service</b>	Yes
<b>Food</b>	Yes local food
<b>Excursion possibilities</b>	Yes
<b>Souvenirs, shopping</b>	Yes
<b>Special features</b>	One of the most important purpose of the tourism activities is to protect the green lake of Daihai.
<b>Languages</b>	English, Chinese
<b>Future highlights</b>	Farm tours with opportunities of “pick your own” farm products like fruits etc. Also science, culture, training and conference hub, health-related tourism etc.

**Contact details**  
Xie Xiaoling

**Address**  
Inner Mongolia Daihai Protection and Construction Co.Ltd, Liangcheng Town, Ulanchab City

**Phone**  
+86 474-4449688

**E-mail**  
chim@daihai.cn

**Website**  
www.daihai.cn

Ulanchab, “red mountain pass” in Mongolian, is situated in the central part of Inner Mongolia. It has a long history and numerous historical sites and relics around the Dauhai Lake. Ulanchab is endowed with beautiful landscape: grasslands, forest, mountains, lakes, hot springs and extinct volcanoes.

Daihai Tourist area was established in 2004, invested by Beijing Energy Investment Group. Daihai company mainly deals with tourism, providing surrounding cities a place for leisure. The scenic spot bears a strong sense of social responsibility. Except for the corporate earnings, it protects the surrounding environment and provides lots of jobs, which is typical combination of social, economic and environmental benefits for the local people. Based on the lake, they've started with cruise trips, swimming and lake sightseeing opportunities.

## INNER MONGOLIA DAIHAI PROTECTIVE TOURIST AREA



<b>Main activity</b>	Experience of farmer's life, lake tour, hot spring.
<b>Additional activities</b>	To enjoy beautiful nature, food tasting, participation on farming and harvesting on hands-on principles, children's packages to learn and experience the farm life, camel riding, bird watching.
<b>Facilities</b>	Hotel, reception, children's camp base.
<b>Location</b>	Daihai Lake, Liangcheng Town, Ulanchab, Inner Mongolia.
<b>Travel distance from Hohhot</b>	120 km.
<b>Travel distance from Beijing</b>	400 km.
<b>Main attractions nearby</b>	<b>Natural:</b> Ulanchab Grassland, Daihai Lake, Huanghua Valley <b>Historical and cultural resources:</b> great walls in Han and Ming Dynasties.
<b>Season</b>	All year around, but main season is on summer.
<b>Tours</b>	Yes
<b>Local guide service</b>	Yes
<b>Food</b>	Yes
<b>Excursion possibilities</b>	Yes
<b>Souvenirs, shopping</b>	Local products from farm.
<b>Special features</b>	Happy farming experience activities such as “to be a one day farmer”. Active holidays (possibility to rent a byke, walking, riding on horse-back etc.).
<b>Languages</b>	English, Mongolian, Chinese.
<b>Future highlights</b>	To improve accommodation and local guiding, to improve facilities (conference, hot spring, education and entertainment) and their standard, to involve local people to benefit from tourism activities, to develop eco-agriculture as tourism feature.

**Contact details**  
Guo Yang

**Address**  
Daihai Agricultural Sightseeing Garden Northeast shore, Daihai Lake, Liangcheng Town, Inner Mongolia, Ulanchab City, China

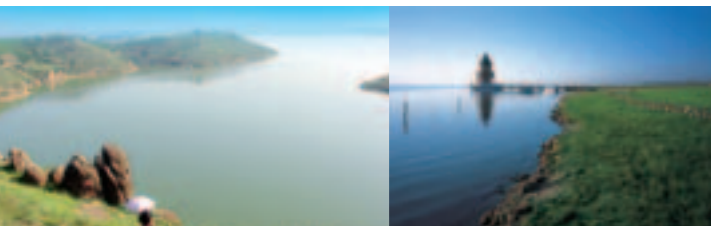
**Phone**  
+86 474-4449988

**E-mail**  
guoy@daihai.cn

**Website**  
www.daihai.cn

Daihai Agricultural Tour Garden features on eco and high tech agriculture, characterized by green vegetables planting and local characteristics of greenhouse cropping, local specialties orchard grains as the main content, eating and service facilities in the farmer's family for reception. Sightseeing around the property integrates the agriculture and tourism together, using the pastoral landscape, the agricultural production and operation activities, rural environment to attract visitors and tourists to taste the green food, to take vacation, and to experience the farming activities. With the other projects in Daihai area, agricultural Tour Garden attracts many customers with high level of value for green culture, healthy food and environment.

## DAIHAI AGRICULTURAL SIGHTSEEING GARDEN



<b>Main activity</b>	Variety of landscapes (lakes forest, grassland, mountains reachable in few kms), nature based accommodation, environmental protecting products.
<b>Additional activities</b>	Local guiding, local food and drinks, excursions, horse riding, take pictures with deer.
<b>Facilities</b>	Hotel, catering.
<b>Location</b>	Arshan City, Xing'an League, Inner Mongolia.
<b>Travel distance from Hohhot</b>	1,600 km
<b>Travel distance from Beijing</b>	1,500 km
<b>Main attractions nearby</b>	<b>Natural:</b> national forest park, national geological park and Arshan nature reserve, wild life, hot spring, snow for half year.
<b>Season</b>	All year round
<b>Tours</b>	Yes
<b>Local guide service</b>	Yes
<b>Food</b>	Yes
<b>Excursion possibilities</b>	Yes
<b>Souvenirs, shopping</b>	Yes
<b>Special features</b>	Orientation to Eco-products, variety of landscapes (lakes forest, grassland, mountains reachable in few km).
<b>Languages</b>	English, Mongolian, Chinese.



#### Contact details

Wu Yukun

#### Address

Linhai Street, Arshan City,  
Xing'an League,  
Inner Mongolia, China

#### Phone

+86 482-7430253

#### E-mail

aesch@163.com

#### Website

www.aesly.com

Located in the south foothill of the Great Xing'an mountains, with the Hulunbuir Grassland in the west, Xilingol Grassland in the south, the Great Xing'an Mountains in the north, Arshan Chaihe Tourist Area covers an area of 13 thousand square kilometres. Tourist resources are extremely rich including hills, rivers, wildlife and folk customs. It is a collection of ecological forests, grassland, hill wetland, lava, hot springs and local ethnic customs and rich human history. Tourist spots in the area include national forest park, national geological park and Arshan nature reserve (autonomous region level). Arshan national forest park is the core scenic spot in the area, and belongs to the volcanic lava landform which creates cool wet zones. The annual average temperature is -3. Forest coverage is about 80%. The park has unique and abundant natural resources and diverse species which could be summed up in a few words: original, natural, magic and diverse. There are 522 kinds of main plants, over 90 various wildlives, 7 volcanic hill lakes, and more than 70 hot springs which are rare in the world.



## ARSHAN CHAIHE TOURIST AREA



## TOURISM CONTACT DETAILS IN INNER-MONGOLIA (CHINA)

### MAJOR TOURISM ADMINISTRATIONS

Name	Address	Phone country code: +86	Web Site
Inner Mongolia Tourism Administration	No.63, Xinhua Street, Hohhot,China		www.nmgtour.gov.cn, www.nmgly.com.cn
General Office		471-694667	
Promotion Department		471-6946609	
Planning & Statistic Department		471-6946383	
Quality Standard Department		471-6946005	
Quality Inspection Centre		471-6282653	
Hohhot Administration	Government Buiding, Xinhua E.St., Huhhot	471-4609242	www.hhhtf100.com.cn
Baotou Administration	No.29, Gangtie St., Baotou	472-5148345	www.btta.gov.cn
HulunBuir Administration	No.17, Alihe St., Hailar, HulunBuir	470-8217020	www.hlbrly.gov.cn
Xing'an League Administration	No.19, Xing'an N.Road, Wulanhot	482-8214371	www.xaly.gov.cn
Tongliao Administration	No.90, Xinxing St. Kerqing Dis, Tongliao	475-8255151	www.tlly.net
Chifeng Administration	Government Building, Xincheng Dis., Chifeng	476-8333058	www.cfly.net
Xilingol League Administration	F12, government building, Xilinhot	479-8268009	www.zgcyly.com
Ulanchar Administration	Government Building, Jining Dis., Ulanchar	474-8182686	www.wlcbly.gov.cn
Erdos Administration	F10, government building, Dongsheng Dis., Erdos	477-8588524	www.ordosta.cn
Alax League Administration	Government building, Bayanhot, Alax	483-8358566	www.alsly.com.cn
Manzhouli Administration	Century Square, Wudao St., Manzhouli	470-6225917	www.mzltour.com
Erenhot Administration	Tourism Building, Youyi N.Road, Erenhot	479-7532175	www.elhtly.com

### MAJOR TRAVEL AGENCIES IN INNER MONGOLIA

Name	Address	Phone country code: +86
Inner Mongolia China Travel Agency	No.95, Yishuting S. St., Huhhot	471-6926774
Inner Mongolia Railway Int'l Travel Agency	No. 27, Xilin N. Road, Huhhot	471-2244822
Inner Mongolia China Int'l Travel Service	No.95, Yishuting S. St, Huhhot	471-6262789
Inner Mongolia New Century Comfort Int'l	No.32, Xinhua St., Huhhot	471-6921177
HulunBuir China Int'l Travel Service	No.22, Alihe Road, Hailar	470-8224017
HulunBuir China Travel Service	No.2, Shengli St., Hailar	470-8232986
Chifeng Int'l Travel Service	Zhaowuda Road, Chifeng	476-8249921
Erenhot China Int'l Travel Service	Waishi Building, Youyi Road, Erenhot	479-7521096



This project is funded by the EUROPEAN UNION

The European Union is made up of 27 Member States who have decided to gradually link together their know-how, resources and destinies.

Together, during a period of enlargement of 50 years, they have built a zone of stability, democracy and sustainable development whilst maintaining cultural diversity, tolerance and individual freedoms.

The European Union is committed to sharing its achievements and its values with countries and peoples beyond its borders.

The European Commission is the EU's executive body.

ASIA INVEST



The European Union's Asia Invest Programme